

apparecchio di illuminazione da parete per interni IP20. composto da corpo rettangolare, realizzato in alluminio ossidato o verniciato a polvere, completo di diffusore estruso in policarbonato opalino.

modelli:

net 24 muro 220x70x57mm 2x5,5W,

net 48 muro 480x70x57mm 2x12,5W,

net 96 muro 960x70x57mm 2x24,5W,

net 192 muro 1920x70x57mm 2x49,5W.

cablato con sorgente elettronica 2700K o 3000K Ra95 biemissione.

alimentatore 220-240V 50-60Hz incluso.

finiture: bianco V, argento hacca e marrone mn.

IP20 rated wall light fitting for indoor use. consisting of a rectangular fitting, made of oxidised or powder coated aluminium, complete with opal polycarbonate extruded diffuser.

versions:

net 24 muro 220x70x57mm 2x5.5W,

net 48 muro 480x70x57mm 2x12.5W,

net 96 muro 960x70x57mm 2x24.5W,

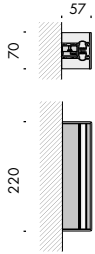
net 192 muro 1920x70x57mm 2x49.5W.

wired with 2700K or 3000K Ra95 bi-directional led source.

220-240V 50-60Hz power supply included.

finishes: bianco V, argento hacca and marrone mn.





net 24 muro 220-240V 50-60Hz

Vb6.584.01.27.1	bianco V	2700K	2x5,5W	220mm	1,7
Vb6.584.06.27.1	argento hacca	2700K	2x5,5W	220mm	1,7
Vb6.584.04.27.1	marrone mn	2700K	2x5,5W	220mm	1,7

I.d. (luce diretta - direct light)

Ra	R9	ies tm-30		sdc	V _f	lm/m	W/m	lm/W	
95	90	Rf 90	Rg 98	step 2	24	2400	26	92	A+
V3000	11	Ta25 °C		vita media · average life		50000 h	L80	B10	

I.i. (luce indiretta - indirect light)

Ra	R9	ies tm-30		sdc	V _f	lm/m	W/m	lm/W	
95	90	Rf 90	Rg 98	step 2	24	2400	26	92	A+
V3000	11	Ta25 °C		vita media · average life		50000 h	L80	B10	

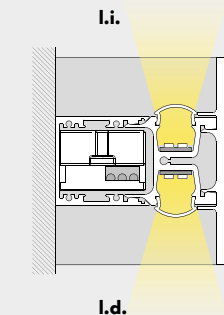
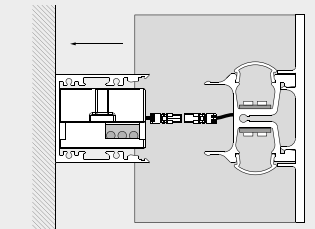
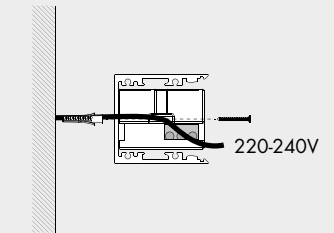
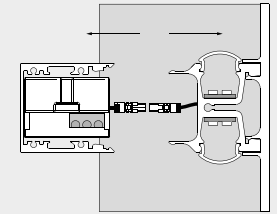
Vb6.584.01.30.1	bianco V	3000K	2x5,5W	220mm	1,7
Vb6.584.06.30.1	argento hacca	3000K	2x5,5W	220mm	1,7
Vb6.584.04.30.1	marrone mn	3000K	2x5,5W	220mm	1,7

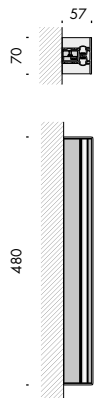
I.d. (luce diretta - direct light)

Ra	R9	ies tm-30		sdc	V _f	lm/m	W/m	lm/W	
95	90	Rf 93	Rg 102	step 2	24	2500	26	96	A+
V3001	11	Ta25 °C		vita media · average life		50000 h	L80	B10	

I.i. (luce indiretta - indirect light)

Ra	R9	ies tm-30		sdc	V _f	lm/m	W/m	lm/W	
95	90	Rf 93	Rg 102	step 2	24	2500	26	96	A+
V3001	11	Ta25 °C		vita media · average life		50000 h	L80	B10	





net 48 muro 220-240V 50-60Hz **A** **ff** **IP20** **CE** **i**

Vb6.584.11.27.1 bianco V 2700K 2x12,5W 480mm 2,7

Vb6.584.16.27.1 argento hacca 2700K 2x12,5W 480mm 2,7

Vb6.584.14.27.1 marrone mn 2700K 2x12,5W 480mm 2,7

I.d. (luce diretta · direct light)

Ra	R9	ies tm-30		sdc	V _f	lm/m	W/m	lm/W	
95	90	Rf 90	Rg 98	step 2	24	2400	26	92	A+
V3000	11		Ta25 °C	vita media · average life		50000 h	L80 B10		

I.i. (luce indiretta · indirect light)

Ra	R9	ies tm-30		sdc	V _f	lm/m	W/m	lm/W	
95	90	Rf 90	Rg 98	step 2	24	2400	26	92	A+
V3000	11		Ta25 °C	vita media · average life		50000 h	L80 B10		

Vb6.584.11.30.1 bianco V 3000K 2x12,5W 480mm 2,7

Vb6.584.16.30.1 argento hacca 3000K 2x12,5W 480mm 2,7

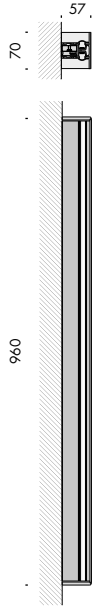
Vb6.584.14.30.1 marrone mn 3000K 2x12,5W 480mm 2,7

I.d. (luce diretta · direct light)

Ra	R9	ies tm-30		sdc	V _f	lm/m	W/m	lm/W	
95	90	Rf 93	Rg 102	step 2	24	2500	26	96	A+
V3001	11		Ta25 °C	vita media · average life		50000 h	L80 B10		

I.i. (luce indiretta · indirect light)

Ra	R9	ies tm-30		sdc	V _f	lm/m	W/m	lm/W	
95	90	Rf 93	Rg 102	step 2	24	2500	26	96	A+
V3001	11		Ta25 °C	vita media · average life		50000 h	L80 B10		



net 96 muro 220-240V 50-60Hz IP20

Vb6.584.21.27.1	bianco V	2700K	2x24,5W	960mm	3,2
Vb6.584.26.27.1	argento hacca	2700K	2x24,5W	960mm	3,2
Vb6.584.24.27.1	marrone mn	2700K	2x24,5W	960mm	3,2

I.d. (luce diretta - direct light)

Ra	R9	ies tm-30		sdcm	V _f	lm/m	W/m	lm/W	
95	90	Rf 90	Rg 98	step 2	24	2400	26	92	A+
V3000	11	Ta25 °C		vita media · average life		50000 h	L80	B10	

I.i. (luce indiretta - indirect light)

Ra	R9	ies tm-30		sdcm	V _f	lm/m	W/m	lm/W	
95	90	Rf 90	Rg 98	step 2	24	2400	26	92	A+
V3000	11	Ta25 °C		vita media · average life		50000 h	L80	B10	

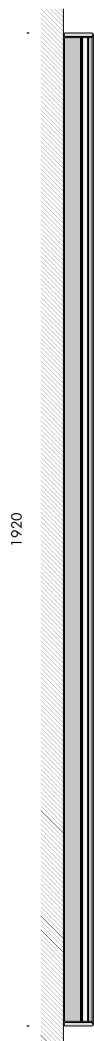
Vb6.584.21.30.1	bianco V	3000K	2x24,5W	960mm	3,2
Vb6.584.26.30.1	argento hacca	3000K	2x24,5W	960mm	3,2
Vb6.584.24.30.1	marrone mn	3000K	2x24,5W	960mm	3,2

I.d. (luce diretta - direct light)

Ra	R9	ies tm-30		sdcm	V _f	lm/m	W/m	lm/W	
95	90	Rf 93	Rg 102	step 2	24	2500	26	96	A+
V3001	11	Ta25 °C		vita media · average life		50000 h	L80	B10	

I.i. (luce indiretta - indirect light)

Ra	R9	ies tm-30		sdcm	V _f	lm/m	W/m	lm/W	
95	90	Rf 93	Rg 102	step 2	24	2500	26	96	A+
V3001	11	Ta25 °C		vita media · average life		50000 h	L80	B10	



net 192 muro 220-240V 50-60Hz **A** **ff** **IP20** **CE** **i**

Vb6.584.31.27.1 bianco V 2700K 2x49,5W 1920mm 4,8

Vb6.584.36.27.1 argento hacca 2700K 2x49,5W 1920mm 4,8

Vb6.584.34.27.1 marrone mn 2700K 2x49,5W 1920mm 4,8

I.d. (luce diretta · direct light)

Ra	R9	ies tm-30		sdc	V _f	lm/m	W/m	lm/W	
95	90	Rf 90	Rg 98	step 2	24	2400	26	92	A+
V3000	11		Ta25 °C	vita media · average life		50000 h	L80 B10		

I.i. (luce indiretta · indirect light)

Ra	R9	ies tm-30		sdc	V _f	lm/m	W/m	lm/W	
95	90	Rf 90	Rg 98	step 2	24	2400	26	92	A+
V3000	11		Ta25 °C	vita media · average life		50000 h	L80 B10		

Vb6.584.31.30.1 bianco V 3000K 2x49,5W 1920mm 4,8

Vb6.584.36.30.1 argento hacca 3000K 2x49,5W 1920mm 4,8

Vb6.584.34.30.1 marrone mn 3000K 2x49,5W 1920mm 4,8

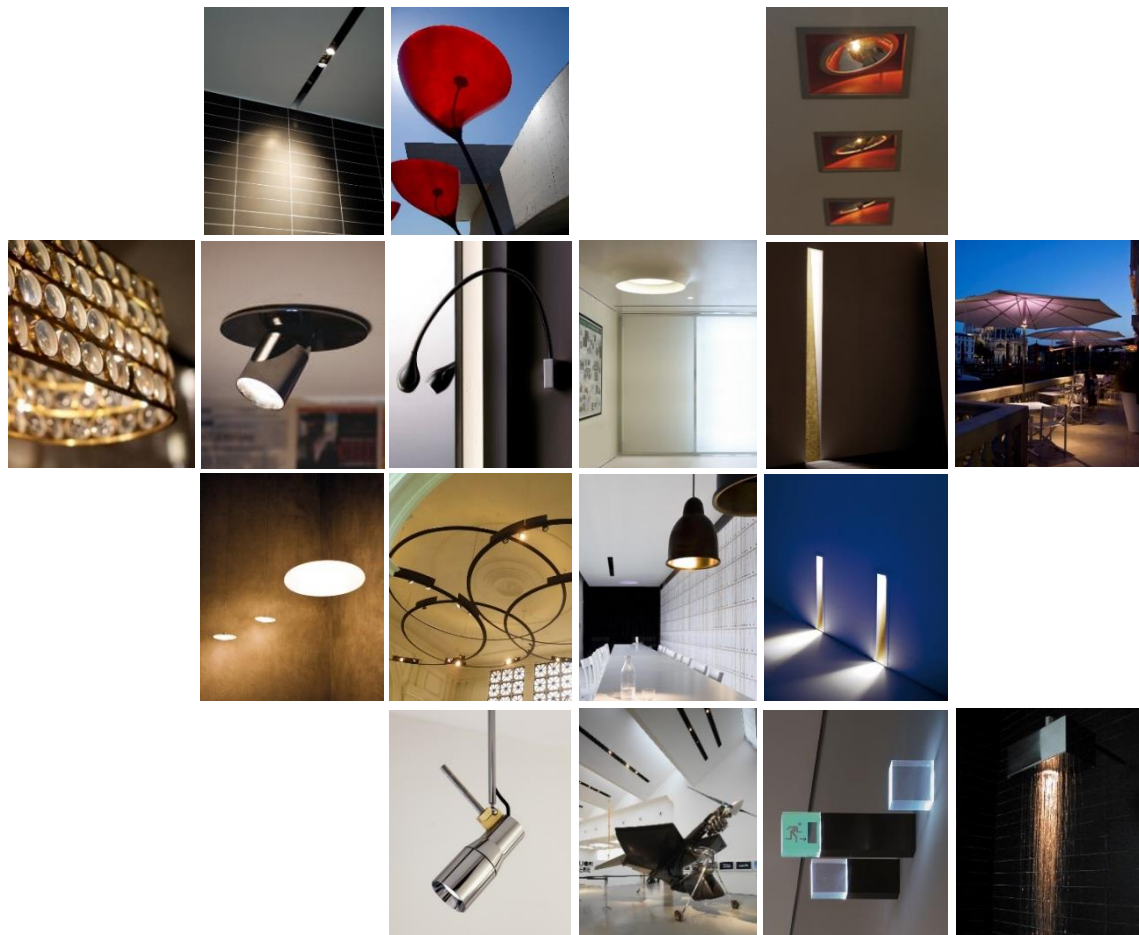
I.d. (luce diretta · direct light)

Ra	R9	ies tm-30		sdc	V _f	lm/m	W/m	lm/W	
95	90	Rf 93	Rg 102	step 2	24	2500	26	96	A+
V3001	11		Ta25 °C	vita media · average life		50000 h	L80 B10		

I.i. (luce indiretta · indirect light)

Ra	R9	ies tm-30		sdc	V _f	lm/m	W/m	lm/W	
95	90	Rf 93	Rg 102	step 2	24	2500	26	96	A+
V3001	11		Ta25 °C	vita media · average life		50000 h	L80 B10		





Subscribe To Our Newsletter



**Distributor for Viabizzuno
Architectural Lighting Solutions**

Web: www.cirruslighting.co.uk

Email: sales@cirruslighting.co.uk

Tel: 0207 193 2175

Fax: 0207 193 3175

