



corpo illuminante da terra per interni IP20.

realizzato da stelo in fibra di vetro con terminale di alluminio e base quadrata in zama verniciata a polvere. base predisposta per alloggiare due aste a 48Vdc cablate con alimentatore, stelo cablato con converter 48Vdc e doppia sorgente led, luce diretta diffusa e indiretta. ruotando lo stelo sulla base è possibile spegnere e accendere le due sorgenti led in modo indipendente.

dimensioni: stelo l.2168mm,

base 200x200x40mm, terminale di alluminio Ø70x205mm.

cablato con led 2700K 17,4W per la luce indiretta e led 2,2W per la luce diffusa.

alimentatore 220-240V 50-60Hz incluso.

finiture: stelo bianco, arancione e nero; base in metallo naturale o verniciato bianco; terminale in alluminio naturale o bianco.

IP20-rated floor-standing light fitting for indoor use.

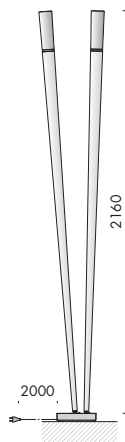
made of a fibreglass stem with an aluminium end and a zamak alloy powder painted square base. the base is designed to fit two 48Vdc rods wired with a power supply unit, a stem wired with 48Vdc converter and double led source, direct diffused and indirect light. by turning the stem on its base, the two led sources can be independently turned off and on. sizes: stem 2168mm long, base 200x200x40mm, aluminium end Ø70x205mm.

wired with 2700K 17.4W led for indirect light and 2.2W led for diffused light.

220-240V 50-60Hz power supply unit included.

finishes: white, orange and black for the stem; natural or painted white metal for the base and natural or white steel for the end.





bamboo

240V 48Vdc

IP20

CE

Via.103.0001 canna 1 bianco/stem 1 white
canna 2 bianco/stem 2 white

led 2700K

l.i 17,4W

l.d. 2,2W

terminale alluminio naturale
cap natural aluminium

base fusione naturale
base raw casting

canna in fibra di vetro
fiberglass stem



Via.103.0002 canna 1 bianco/stem 1 white
canna 2 nero/stem 2 black

led 2700K

l.i 17,4W

l.d. 2,2W

terminale alluminio naturale
cap natural aluminium

base fusione naturale
base raw casting

canna in fibra di vetro
fiberglass stem



Via.103.0003 canna 1 bianco/stem 1 white
canna 2 arancio/stem 2 orange

led 2700K

l.i 17,4W

l.d. 2,2W

terminale alluminio naturale
cap natural aluminium

base fusione naturale
base raw casting

canna in fibra di vetro
fiberglass stem



personalizza il tuo corpo illuminante
customize your light fitting



1. scegli la canna
choose the stem



2. scegli la base
choose the base



3. scegli il terminale
choose the cap



bamboo		48Vdc	IP20	CE
Vb4.501.10	bianco white	led 2700K	l.i 17,4W l.d. 2,2W	
Vb4.501.11	arancio orange	led 2700K	l.i 17,4W l.d. 2,2W	
Vb4.501.12	nero black	led 2700K	l.i 17,4W l.d. 2,2W	
canna in fibra di vetro fiberglass stem				

luce indiretta/indirect light

Ra	selezione macadam macadam selection	lm	W	lm/W	classe energetica energy class
95	step 2	1796	17,4	103	A+

vita media/average life 50000 h Ta 25°C/L80 - B10 - F10

luce diffusa/diffused light

Ra	selezione macadam macadam selection	lm	W	lm/W	classe energetica energy class
95	step 2	1796	17,4	103	A+

vita media/average life 50000 h Ta 25°C/L80 - B10 - F10

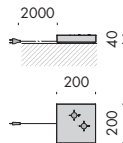




componenti. components.



- A4.501.21** terminale bianco V
bianco V cap
- A4.501.22** terminale alluminio naturale
cap natural aluminium



componenti. components.

240V/48Vdc 50-60Hz



IP20

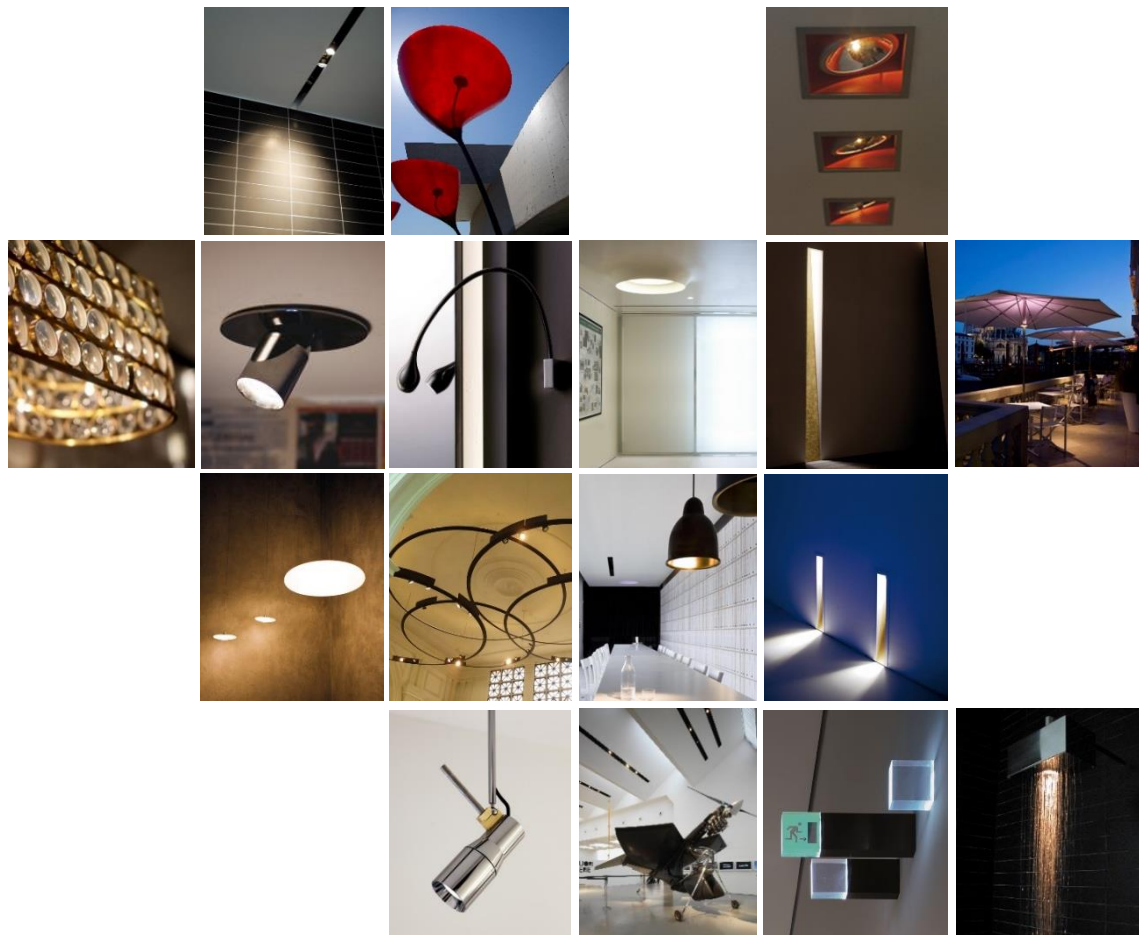


- Vb4.501.01** base bianco
base white
- Vb4.501.02** base fusione naturale
base raw casting
- cavo 2m con spina ita 2 poli
cable 2m with cable ita plug 2 pole included









**Distributor for Viabizzuno
Architectural Lighting Solutions**

Web: www.cirruslighting.co.uk

Email: sales@cirruslighting.co.uk

Tel: 0207 193 2175

Fax: 0207 193 3175

