

linea di luce UpO



linea di luce Viabizzuno in bobina adesiva da applicare su profili in alluminio.
modelli:

linea di luce Ra95/13 cablata con sorgente elettronica con limitatore di corrente integrato Ra95 2700K, 3000K, 4000K e 5000K 13W/m 24Vdc di dimensioni 5,9x6000mm sezionabile ogni 33,33mm.

linea di luce Ra95/26 cablata con sorgente elettronica con limitatore di corrente integrato Ra95 2700K, 3000K, 4000K, 5000K e 2700/4000K (con due canali separati) 26W/m 24Vdc di dimensioni 11x6000mm sezionabile ogni 33,33mm.

linea di luce rgb cablata con sorgente elettronica con limitatore di corrente integrato 14W/m 3x24Vdc pwm di dimensioni 11x6000mm sezionabile ogni 98,33mm.

linea di luce Ra80/6 cablata con sorgente elettronica con limitatore di corrente integrato Ra80 2700K, 3000K, 4000K e 5000K 6W/m 24Vdc di dimensioni 9x6000mm sezionabile ogni 98,33mm.

linea di luce Ra80/12 cablata con sorgente elettronica con limitatore di corrente integrato Ra80 2700K, 3000K, 4000K e 5000K 12W/m 24Vdc di dimensioni 9x6000mm sezionabile ogni 93,75mm.

linea di luce Ra80/20 cablata con sorgente elettronica con limitatore di corrente integrato Ra80 2700K, 3000K, 4000K e 5000K 20W/m 24Vdc di dimensioni 9x6000mm sezionabile ogni 93,75mm.

alimentatore in tensione costante escluso da installare remoto.

linea di luce Viabizzuno adhesive strip to be applied on aluminium profiles.
versions:

linea di luce Ra95/13 wired with led source with integrated current limiter Ra95 2700K, 3000K, 4000K and 5000K 13W/m 24Vdc with a size of 5.9x6000mm sectionable every 33.33mm.

linea di luce Ra95/26 wired with led source with integrated current limiter Ra95 2700K, 3000K, 4000K, 5000K and 2700/4000K (with two separate channels) 26W/m 24Vdc with a size of 11x6000mm sectionable every 33.33mm.

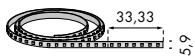
linea di luce rgb wired with led source with integrated current limiter 14W/m 3x24Vdc pwm with a size of 11x6000mm sectionable every 98.33mm.

linea di luce Ra95/6 wired with led source with integrated current limiter Ra95 2700K, 3000K, 4000K and 5000K 6W/m 24Vdc with a size of 9x6000mm sectionable every 98.33mm.

linea di luce Ra80/12 wired with led source with integrated current limiter Ra80 2700K, 3000K, 4000K and 5000K 12W/m 24Vdc with a size of 9x6000mm sectionable every 93.75mm.



linea di luce Ra80/20 wired with led source with integrated current limiter Ra80 2700K, 3000K, 4000K and 5000K 20W/m 24Vdc with a size of 9x6000mm sectionable every 93.75mm.

constant voltage power supply not included to be installed remotely.


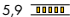


linea di luce Ra95/13 24Vdc      



Vb6.250.121 2700K 6000mm 0,6

Ra	R9	ies tm/30		sdcn	Vf	lm/m	W/m	lm/W	
95	90	Rf 90	Rg 98	step 2	24	1200	13	92	A+
V0000	5,9 		Ta25 °C		vita media · average life		50000 h	L80	B10



Vb6.250.122 3000K 6000mm 0,6

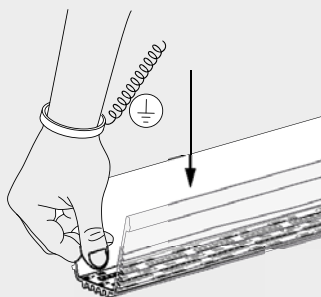
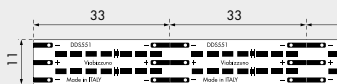
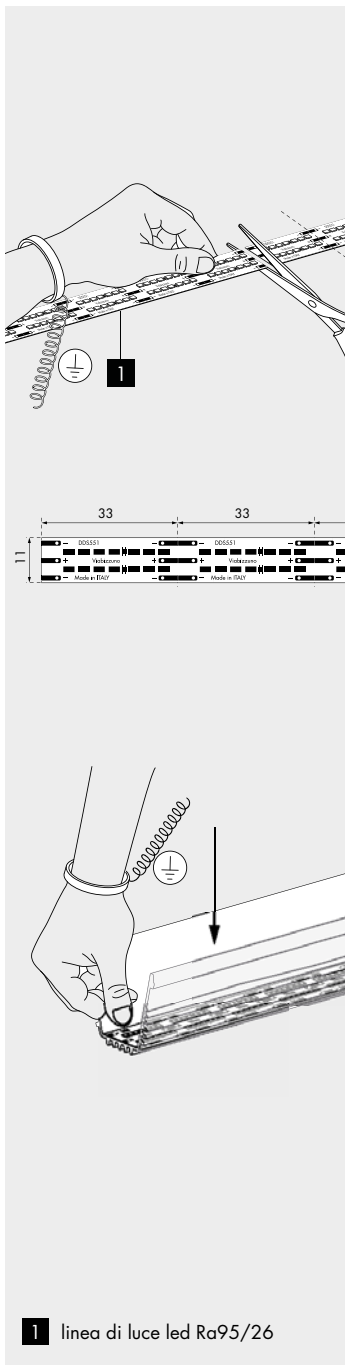
Ra	R9	ies tm/30		sdcn	Vf	lm/m	W/m	lm/W	
95	90	Rf 93	Rg 102	step 2	24	1250	13	96	A+
V0001	5,9 		Ta25 °C		vita media · average life		50000 h	L80	B10

Vb6.250.123 4000K 6000mm 0,6

Ra	R9	ies tm/30		sdcn	Vf	lm/m	W/m	lm/W	
95	95	Rf 90	Rg 98	step 2	24	1300	13	100	A+
V0003	5,9 		Ta25 °C		vita media · average life		50000 h	L80	B10

Vb6.250.124 5000K 6000mm 0,6

Ra	R9	ies tm/30		sdcn	Vf	lm/m	W/m	lm/W	
95	95	Rf 90	Rg 98	step 2	24	1300	13	100	A+
V0005	5,9 		Ta25 °C		vita media · average life		50000 h	L80	B10



1 linea di luce led Ra95/26



linea di luce Ra95/26

24Vdc



Vb6.250.155

2700K 6000mm 0,6

Ra	R9	ies tm-30		sdc	V _f	lm/m	W/m	lm/W	
95	90	Rf 90	Rg 98	step 2	24	2400	26	92	A+
V3000	11	Ta25 °C		vita media · average life		50000 h	L80 B10		

Vb6.250.156

3000K 6000mm 0,6

Ra	R9	ies tm-30		sdc	V _f	lm/m	W/m	lm/W	
95	90	Rf 93	Rg 102	step 2	24	2500	26	96	A+
V3001	11	Ta25 °C		vita media · average life		50000 h	L80 B10		

Vb6.250.157

4000K 6000mm 0,6

Ra	R9	ies tm/30		sdc	V _f	lm/m	W/m	lm/W	
95	95	Rf 90	Rg 98	step 2	24	2600	26	100	A+
V3003	11	Ta25 °C		vita media · average life		50000 h	L80 B10		

Vb6.250.158

5000K 6000mm 0,6

Ra	R9	ies tm/30		sdc	V _f	lm/m	W/m	lm/W	
95	95	Rf 90	Rg 98	step 2	24	2600	26	100	A+
V3005	11	Ta25 °C		vita media · average life		50000 h	L80 B10		

Vb6.250.130

2700/4000K 6000mm 0,6

Ra	R9	ies tm/30		sdc	V _f	lm/m	W/m	lm/W	
95	90	Rf 90	Rg 98	step 2	24	1200	13	92	A+
V0000	11	Ta25 °C		vita media · average life		50000 h	L80 B10		

Ra	R9	ies tm/30		sdc	V _f	lm/m	W/m	lm/W	
95	95	Rf 90	Rg 98	step 2	24	1300	13	100	A+
V0003	11	Ta25 °C		vita media · average life		50000 h	L80 B10		

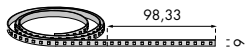
linea di luce

3x24Vdc pwm



f6.250.25.1

rgb 14W/m 300lm/m 6000mm 0,6



linea di luce Ra80/6 **24Vdc**

f6.250.31 2700K 6000mm 0,6

Ra	ies tm/30		sdcn	Vf	lm/m	W/m	lm/W	
80	Rf 82	Rg 91	step 2	24	580	6	97	A+
V1000	9 Ta25 °C		vita media · average life		50000 h	L80	B10	

f6.250.32 3000K 6000mm 0,6

Ra	ies tm/30		sdcn	Vf	lm/m	W/m	lm/W	
80	Rf 83	Rg 94	step 2	24	600	6	100	A++
V1001	9 Ta25 °C		vita media · average life		50000 h	L80	B10	

f6.250.33 4000K 6000mm 0,6

Ra	ies tm/30		sdcn	Vf	lm/m	W/m	lm/W	
80	Rf 81	Rg 92	step 2	24	624	6	104	A++
V1003	9 Ta25 °C		vita media · average life		50000 h	L80	B10	

f6.250.34 5000K 6000mm 0,6

Ra	ies tm/30		sdcn	Vf	lm/m	W/m	lm/W	
80	Rf 80	Rg 90	step 2	24	624	6	104	A++
V1005	9 Ta25 °C		vita media · average life		50000 h	L80	B10	



linea di luce Ra80/12 **24Vdc**

f6.250.41 2700K 6000mm 0,6

Ra	ies tm/30		sdc	Vf	lm/m	W/m	lm/W	
80	Rf 82	Rg 91	step 2	24	1160	12	97	A+
V1010	° Ta25 °C		vita media · average life		50000 h	L80 B10		

f6.250.42 3000K 6000mm 0,6

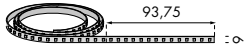
Ra	ies tm/30		sdc	Vf	lm/m	W/m	lm/W	
80	Rf 83	Rg 94	step 2	24	1200	12	100	A+
V1011	° Ta25 °C		vita media · average life		50000 h	L80 B10		

f6.250.43 4000K 6000mm 0,6

Ra	ies tm/30		sdc	Vf	lm/m	W/m	lm/W	
80	Rf 81	Rg 92	step 2	24	1248	12	104	A+
V1013	° Ta25 °C		vita media · average life		50000 h	L80 B10		

f6.250.44 5000K 6000mm 0,6

Ra	ies tm/30		sdc	Vf	lm/m	W/m	lm/W	
80	Rf 80	Rg 90	step 2	24	1248	12	104	A+
V1015	° Ta25 °C		vita media · average life		50000 h	L80 B10		



linea di luce Ra80/20 24Vdc

f6.250.51 2700K 6000mm 0,6

Ra	ies tm/30		sdcm	Vf	lm/m	W/m	lm/W	
80	Rf 82	Rg 91	step 2	24	1933	20	97	A+
V1020	° Ta25 °C		vita media · average life		50000 h	L80	B10	

f6.250.52 3000K 6000mm 0,6

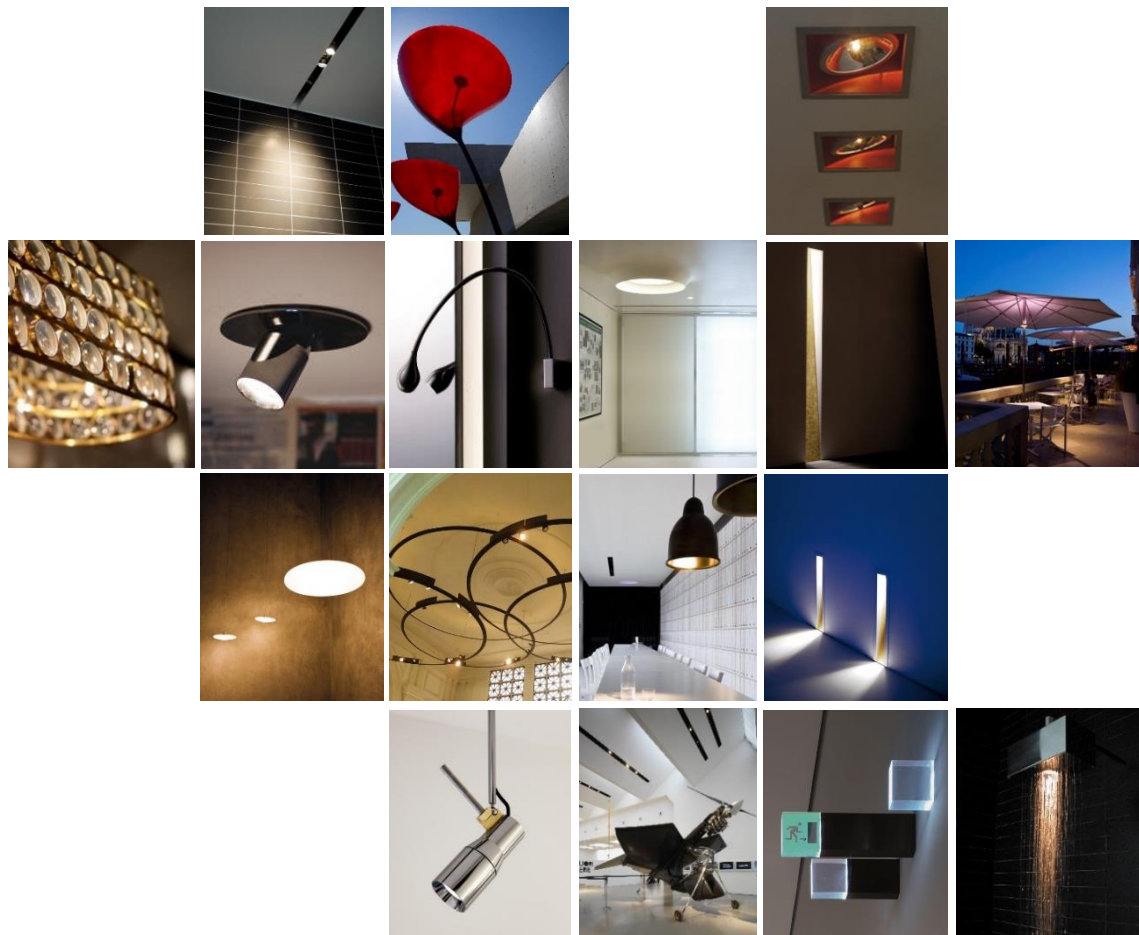
Ra	ies tm/30		sdcm	Vf	lm/m	W/m	lm/W	
80	Rf 83	Rg 94	step 2	24	2000	20	100	A+
V1021	° Ta25 °C		vita media · average life		50000 h	L80	B10	

f6.250.53 4000K 6000mm 0,6

Ra	ies tm/30		sdcm	Vf	lm/m	W/m	lm/W	
80	Rf 81	Rg 92	step 2	24	2080	20	104	A+
V1023	° Ta25 °C		vita media · average life		50000 h	L80	B10	

f6.250.54 5000K 6000mm 0,6

Ra	ies tm/30		sdcm	Vf	lm/m	W/m	lm/W	
80	Rf 80	Rg 90	step 2	24	2080	20	104	A+
V1025	° Ta25 °C		vita media · average life		50000 h	L80	B10	



Subscribe To Our Newsletter



**Distributor for Viabizzuno
Architectural Lighting Solutions**

Web: www.cirruslighting.co.uk

Email: sales@cirruslighting.co.uk

Tel: 0207 193 2175

Fax: 0207 193 3175

