



apparecchio di illuminazione da incasso o a scomparsa totale per interni IP20, realizzato in alluminio ossidato e verniciato a polvere. composto da faretto con cassaforma ad incasso a soffitto diametro Ø155mm che può essere installata su spessori da 1mm a 35mm mediante un sistema di alette regolabili o con cassaforma a scomparsa totale diametro Ø130mm.

modelli:

m13 fisso diametro Ø123mm h.148mm,

m13 orientabile di 360° sull'asse verticale e di 15° sull'asse orizzontale, con faretto diametro Ø123 h.148mm,

m13 wallwasher diametro Ø123mm h.156mm.

cablato con sorgente elettronica 2700K, 3000K o 3000Vb K (progettato per il settore alta moda) Ra98 fino a 30,5W 3000lm.

ottiche: 19° 28° 42° 54° o wallwasher.

alimentatore in corrente costante escluso, da installare remoto.

accessori: ottiche intercambiabili, frangiluce a nido d'ape, filtro albarino, lente ellittica, vetro sabbiato.

finiture: my bianco o nero55, cassaforma ad incasso my bianco, nero55 o bruno, cassaforma a scomparsa totale nero55.

IP20 rated recessed light fitting for indoor use, made of powder coated oxidized aluminium. consisting spotlight with recessed ceiling housing diameter Ø155mm which can be installed on surfaces from 1mm up to 35mm by means of a system of adjustable tabs.

versions:

m13 fisso with diameter Ø123mm h.148mm spotlight,

m13 orientabile with diameter Ø123mm h.148mm spotlight adjustable by 360° on the vertical axis and by 15° on the horizontal axis,

m13 incasso wallwasher with diameter Ø123mm h.156mm spotlight.

wired with 2700K, 3000K or 3000Vb K (designed for high fashion industry) Ra98 led source up to 30.5W 3000lm.

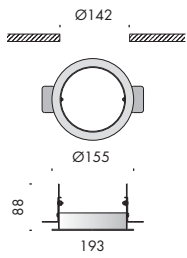
optics: 19° 28° 42° 54° or wallwasher.

constant current power supply not included, to be installed remotely.

accessories: interchangeable optics, honeycomb louvre, albarino filter, elliptical lens, frosted glass.

finishes: spotlights my bianco or nero55, recessed housing my bianco, nero55 or brown, fully concealed housing nero55.





m13 cassaforma incasso



f9.025.52 my bianco

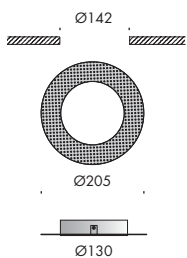
0,4

f9.025.51 nero55

0,4

f9.025.53 bruno · brown

0,4

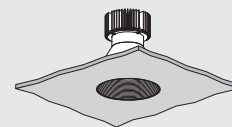
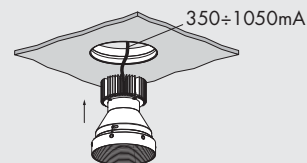
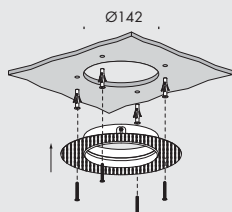
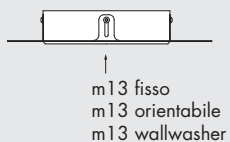
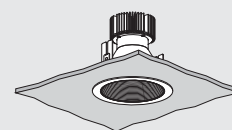
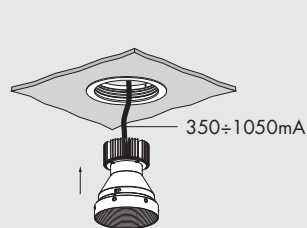
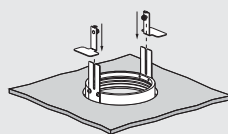
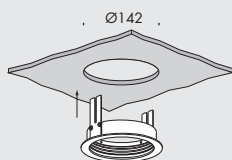


m13 cassaforma scomparsa totale

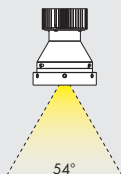


f9.025.50 nero55

0,3



gradi di apertura fascio luminoso
beam's angle degrees



148

Ø123

m13 fisso		Ⓜ	Ⓚ	Ⓢ	IP20	★	CE	i
Vb6.025.11.27	my bianco	2700K	19°	0,7				
Vb6.025.01.27	nero55	2700K	19°	0,7				
Vb6.025.12.27	my bianco	2700K	28°	0,7				
Vb6.025.02.27	nero55	2700K	28°	0,7				
Vb6.025.13.27	my bianco	2700K	42°	0,7				
Vb6.025.03.27	nero55	2700K	42°	0,7				
Vb6.025.14.27	my bianco	2700K	54°	0,7				
Vb6.025.04.27	nero55	2700K	54°	0,7				

Ra	R9	ies tm-30		sdc	mA	V _f (min)	lm	W	lm/W	Energy Efficiency Class
98	98	Rf 96	Rg 103	step 1	350	27,6	1240	9,7	128	A++
					500	27,9	1580	14,0	113	A+
					700	28,4	2140	19,9	108	A+
					1050	29,0	3000	30,5	98	A+
xm000	les19	●	Ta25 °C	vita media · average life	70000 h	L80	B10			

Vb6.025.11.30	my bianco	3000K	19°	0,7				
Vb6.025.01.30	nero55	3000K	19°	0,7				
Vb6.025.12.30	my bianco	3000K	28°	0,7				
Vb6.025.02.30	nero55	3000K	28°	0,7				
Vb6.025.13.30	my bianco	3000K	42°	0,7				
Vb6.025.03.30	nero55	3000K	42°	0,7				
Vb6.025.14.30	my bianco	3000K	54°	0,7				
Vb6.025.04.30	nero55	3000K	54°	0,7				

Ra	R9	ies tm-30		sdc	mA	V _f (min)	lm	W	lm/W	Energy Efficiency Class
98	98	Rf 96	Rg 103	step 1	350	27,6	1240	9,7	128	A++
					500	27,9	1580	14,0	113	A+
					700	28,4	2140	19,9	108	A+
					1050	29,0	3000	30,5	98	A+
xm001	les19	●	Ta25 °C	vita media · average life	70000 h	L80	B10			



Ø123

148

Vb6.025.11.30v	my bianco	3000VbK	19°	0,7
Vb6.025.01.30v	nero55	3000VbK	19°	0,7
Vb6.025.12.30v	my bianco	3000VbK	28°	0,7
Vb6.025.02.30v	nero55	3000VbK	28°	0,7
Vb6.025.13.30v	my bianco	3000VbK	42°	0,7
Vb6.025.03.30v	nero55	3000VbK	42°	0,7
Vb6.025.14.30v	my bianco	3000VbK	54°	0,7
Vb6.025.04.30v	nero55	3000VbK	54°	0,7

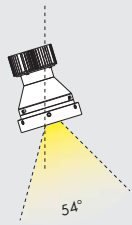
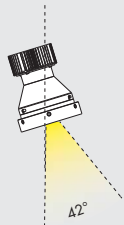
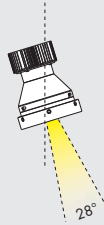
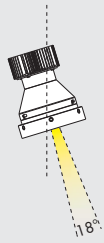
Ra	R9	ies tm-30		sdc	mA	V _f (min)	lm	W	lm/W	Energy Star
98	98	Rf 93	Rg 106	step 1	350	27,6	1240	9,7	128	A++
					500	27,9	1580	14,0	113	A+
					700	28,4	2140	19,9	108	A+
					1050	29,0	3000	30,5	98	A+
xm007	les19	●	Ta25 °C	vita media · average life	70000 h	180	B10			



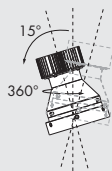




gradi di apertura fascio luminoso
beam's angle degrees



gradi di rotazione
rotation degrees



148

Ø123

m13 orientabile



Vb6.025.41.27	my bianco	2700K	19°	1
Vb6.025.31.27	nero55	2700K	19°	1
Vb6.025.42.27	my bianco	2700K	28°	1
Vb6.025.32.27	nero55	2700K	28°	1
Vb6.025.43.27	my bianco	2700K	42°	1
Vb6.025.33.27	nero55	2700K	42°	1
Vb6.025.44.27	my bianco	2700K	54°	1
Vb6.025.34.27	nero55	2700K	54°	1

Ra	R9	ies tm-30		sdc	mA	V _f (min)	lm	W	lm/W	Energy Efficiency
98	98	Rf 96	Rg 103	step 1	350	27,6	1240	9,7	128	A++
					500	27,9	1580	14,0	113	A+
					700	28,4	2140	19,9	108	A+
					1050	29,0	3000	30,5	98	A+
xm000	les19 ●	Ta25 °C		vita media · average life	70000 h	L80	B10			

Vb6.025.41.30	my bianco	3000K	19°	1
Vb6.025.31.30	nero55	3000K	19°	1
Vb6.025.42.30	my bianco	3000K	28°	1
Vb6.025.32.30	nero55	3000K	28°	1
Vb6.025.43.30	my bianco	3000K	42°	1
Vb6.025.33.30	nero55	3000K	42°	1
Vb6.025.44.30	my bianco	3000K	54°	1
Vb6.025.34.30	nero55	3000K	54°	1

Ra	R9	ies tm-30		sdc	mA	V _f (min)	lm	W	lm/W	Energy Efficiency
98	98	Rf 96	Rg 103	step 1	350	27,6	1240	9,7	128	A++
					500	27,9	1580	14,0	113	A+
					700	28,4	2140	19,9	108	A+
					1050	29,0	3000	30,5	98	A+
xm001	les19 ●	Ta25 °C		vita media · average life	70000 h	L80	B10			

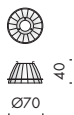


Ø123

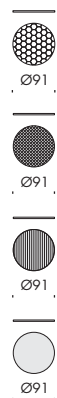
148

Vb6.025.41.30v	my bianco	3000Vb K	19°	1
Vb6.025.31.30v	nero55	3000Vb K	19°	1
Vb6.025.42.30v	my bianco	3000Vb K	28°	1
Vb6.025.32.30v	nero55	3000Vb K	28°	1
Vb6.025.43.30v	my bianco	3000Vb K	42°	1
Vb6.025.33.30v	nero55	3000Vb K	42°	1
Vb6.025.44.30v	my bianco	3000Vb K	54°	1
Vb6.025.34.30v	nero55	3000Vb K	54°	1

Ra	R9	ies tm-30		sdc	mA	V _{f (min)}	lm	W	lm/W	Energy Star
98	98	Rf 93	Rg 106	step 1	350	27,6	1240	9,7	128	A++
					500	27,9	1580	14,0	113	A+
					700	28,4	2140	19,9	108	A+
					1050	29,0	3000	30,5	98	A+
xm007	les19	☉	Ta25 °C	vita media · average life	70000 h	180	B10			



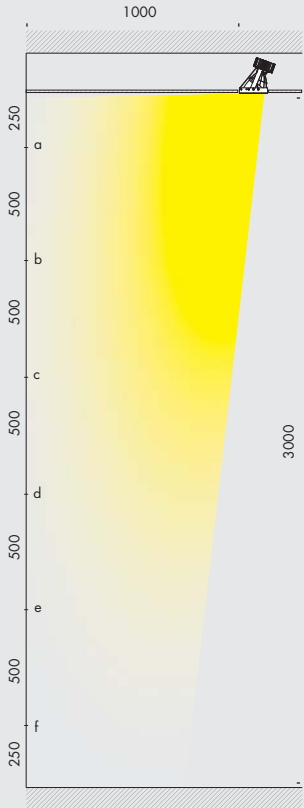
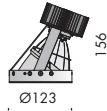
ottiche m13. optics.		☆ CE	i
Vb9.025.61	19°		0,1
Vb9.025.62	28°		0,1
Vb9.025.63	42°		0,1
Vb9.025.64	54°		0,1



accessori. accessories.		☆ CE	i
Vb9.025.66	frangiluce nido d'ape · honeycomb louvre		0,01
Vb9.025.67	filtro albarino · albarino filter		0,08
Vb9.025.68	lente ellittica · elliptical lens		0,1
Vb9.025.69	vetro sabbaiato · sanded glass		0,08



Vb6.025.71.27/30/30v
Vb6.025.61.27/30/30v



	valori in lux lux values
a	42
b	134
c	171
d	127
e	81
f	60

m13 wallwasher

IP20

Vb6.025.71.27 my bianco 2700K 0,9
Vb6.025.61.27 nero55 2700K 0,9

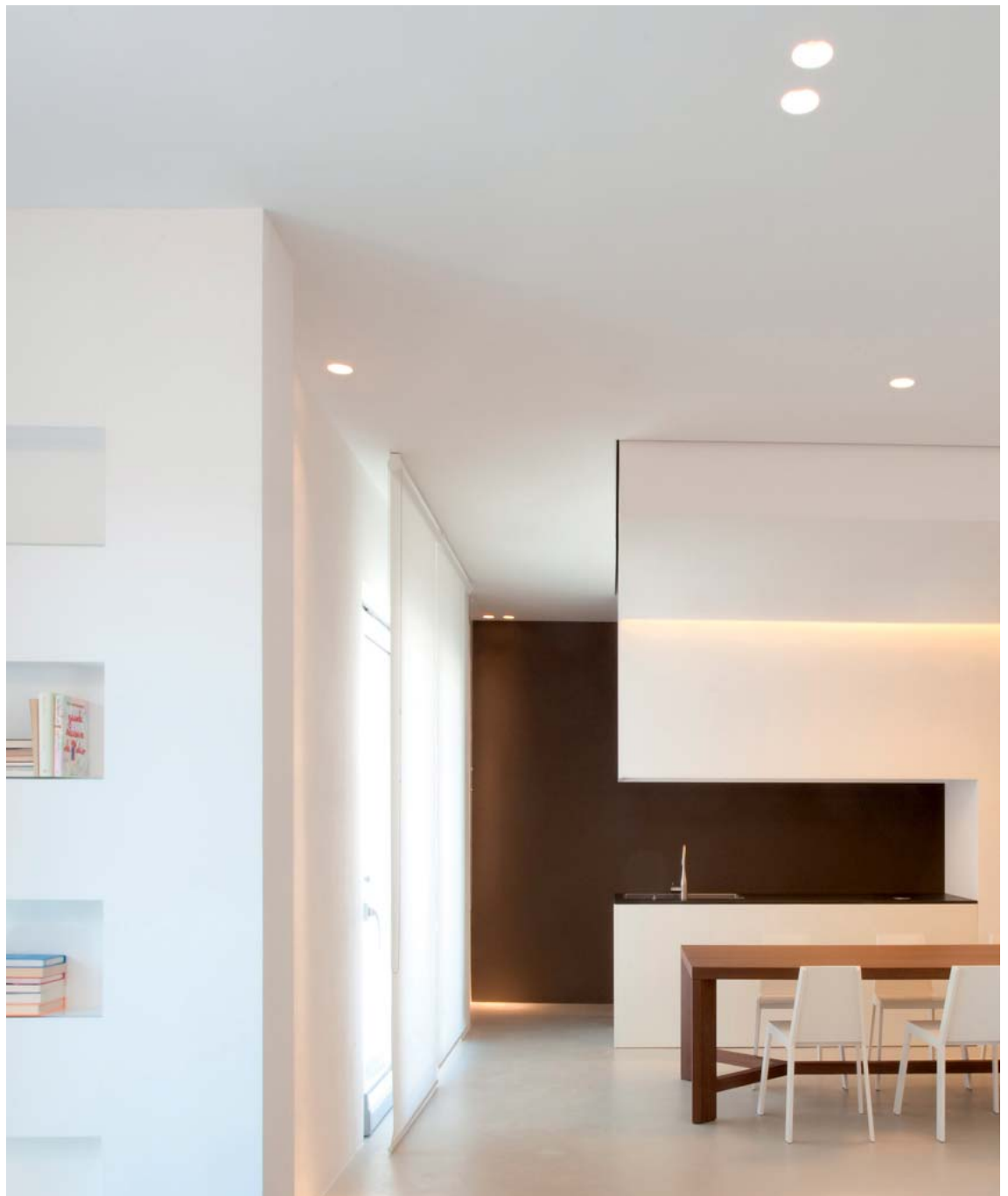
Ra	R9	ies tm-30		sdc	mA	V _f (min)	lm	W	lm/W	
98	98	Rf 96	Rg 103	step 1	350	27,6	1240	9,7	128	A++
					500	27,9	1580	14,0	113	A+
					700	28,4	2140	19,9	108	A+
					1050	29,0	3000	30,5	98	A+
xm000	les19	Ta25 °C		vita media · average life		70000 h	L80 B10			

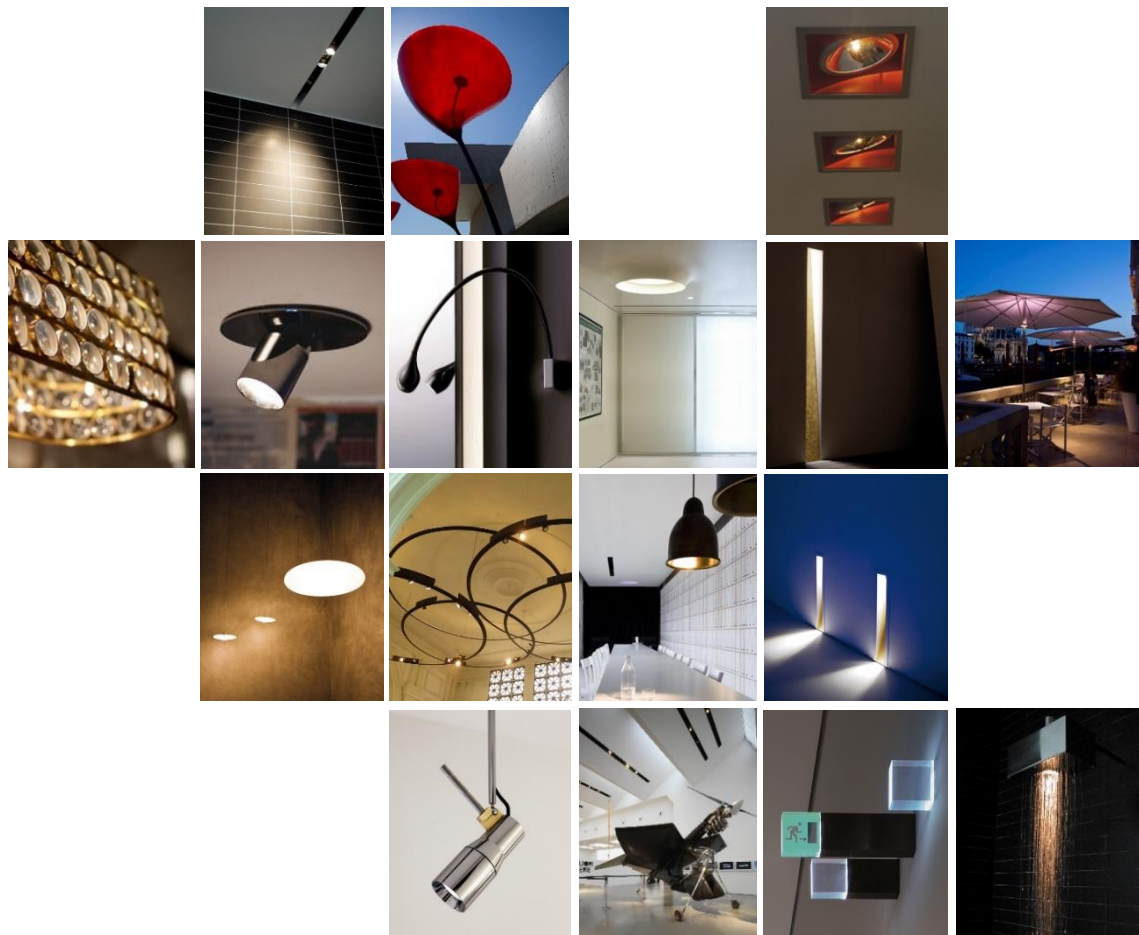
Vb6.025.71.30 my bianco 3000K 0,9
Vb6.025.61.30 nero55 3000K 0,9

Ra	R9	ies tm-30		sdc	mA	V _f (min)	lm	W	lm/W	
98	98	Rf 96	Rg 103	step 1	350	27,6	1240	9,7	128	A++
					500	27,9	1580	14,0	113	A+
					700	28,4	2140	19,9	108	A+
					1050	29,0	3000	30,5	98	A+
xm001	les19	Ta25 °C		vita media · average life		70000 h	L80 B10			

Vb6.025.71.30v my bianco 3000VbK 0,9
Vb6.025.61.30v nero55 3000VbK 0,9

Ra	R9	ies tm-30		sdc	mA	V _f (min)	lm	W	lm/W	
98	98	Rf 93	Rg 106	step 1	350	27,6	1240	9,7	128	A++
					500	27,9	1580	14,0	113	A+
					700	28,4	2140	19,9	108	A+
					1050	29,0	3000	30,5	98	A+
xm007	les19	Ta25 °C		vita media · average life		70000 h	L80 B10			





Subscribe To Our Newsletter



**Distributor for Viabizzuno
Architectural Lighting Solutions**

Web: www.cirruslighting.co.uk

Email: sales@cirruslighting.co.uk

Tel: 0207 193 2175

Fax: 0207 193 3175

