

n55 comodino/tavolo

mario nanni 2014



corpo illuminante da comodino e da tavolo per interni IP20 realizzato in alluminio ossidato argento hacca o nero 55. composto da una base di diametro 110mm o 220mm predisposta per essere cablata con tre tipi di propulsore: propulsore 55/350 cablato con led da 10,8W/350mA 1240lm Ra98, step macadam 1, classe energetica A++; propulsore 55/500 cablato con led da 15,6W/500mA 1580lm Ra98, step macadam 1, classe energetica A+; propulsore 65/700 cablato con led da 22,3W/700mA 2140lm Ra98, step macadam 1, classe energetica A+. tutti i propulsori sono disponibili 2700K e 3000K e sono configurabili attraverso l'apposito attacco portalampada n55, con tre tipi di lampadine: lampadina classica (trasparente, satinata e bianco latte), lampadine decorative e lampadine tecniche che si possono inter-cambiare a piacimento con estrema facilità. completa di potenziometro per la regolazione dell'intensità luminosa, posto sullo spessore della base, cablato con converter 48V e con alimentatore a controllo intelligente, per consentire l'intercambiabilità dei vari propulsori. alimentatore 100-240V fornito con spine eu/uk/usa - Jp/ccc/aus.

IP20-rated indoor light fitting for bedside table and table made of black 55 or argento hacca oxidised aluminium. made of a base having a 110mm or 220mm diameter ready to be wired with three types of propellers: 55/350 propeller wired with 10,8W/350mA 1240lm Ra98 leds, step macadam 1, A++ energy efficiency class; 55/500 propeller wired with 15,6W/500mA 1580lm Ra98 leds, step macadam 1, A+ energy efficiency class; 65/700 propeller wired with 22,3W/700mA 2140lm Ra98 leds, step macadam 1, A+ energy efficiency class. all the propellers are available in 2700K and 3000K version and are configurable by means of the specific n55 lamp-holder, with three types of light bulbs: standard bulb (transparent, satin and milk white), decorative bulbs and technical bulbs that can be interchanged at will and very easily. equipped with a potentiometer for adjusting the luminous intensity, placed on the base's thickness, wired with a 48V converter and an intelligent controlled power supply unit, in order to allow the interchangeability of the various propellers. 100-240V power supply unit with eu/uk/usa - Jp/ccc/aus plugs.



M55

la mia

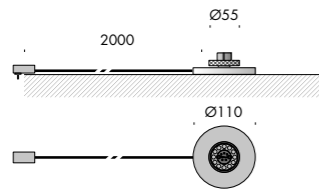
lampadina

chiara
biancolatte o
smerigliata

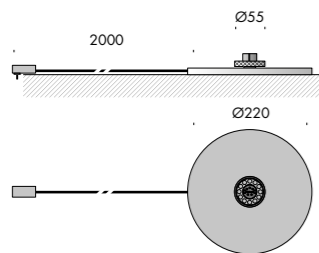


n55 comodino/tavolo

n55 comodino
alimentatore a spina
plug power supply

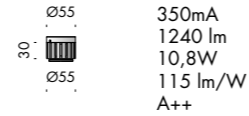


n55 tavolo
alimentatore a spina
plug power supply

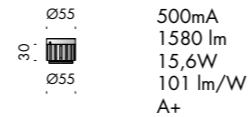


**propulsore
propeller**

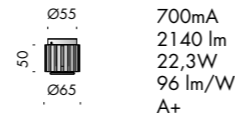
propulsore 55/350



propulsore 55/500



propulsore 65/700



**lampadina classica
classic bulb**

hm01

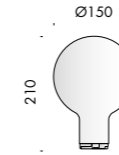


hm02



**lampadina decorativa
decorative bulb**

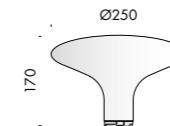
mn01



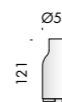
dc01



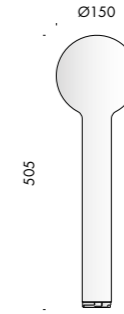
pz01



kk01



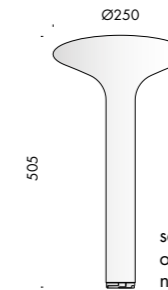
mn02



dc02



pz02



wm01



**lampadina tecnica
technical bulb**

spot 35



spot 55

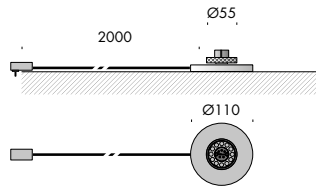


spot 82



spot 100





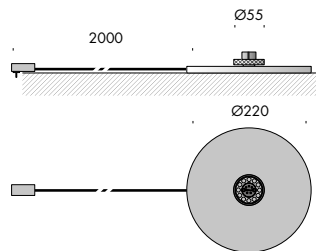
n55 comodino 110-240V 50-60Hz **A** ECG IP20

Vb2.580.05 argento hacca

Vb2.580.06 nero 55
black 55

dimmerabile 1-10V
dimnable 1-10V

Ra	R9	selezione macadam macadam selection	mA	lm	W	lm/W	classe energetica energy class
98	98	step 1	350	1240	10,8	115	A++
			500	1580	15,6	101	A+
			700	2140	22,3	96	A+



n55 tavolo 110-240V 50-60Hz **A** ECG IP20

Vb2.580.01 argento hacca

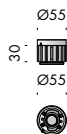
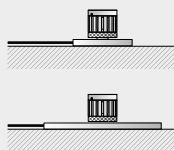
Vb2.580.02 nero 55
black 55

dimmerabile 1-10V
dimnable 1-10V

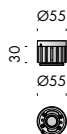
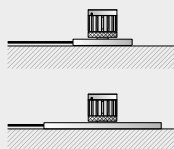
Ra	R9	selezione macadam macadam selection	mA	lm	W	lm/W	classe energetica energy class
98	98	step 1	350	1240	10,8	115	A++
			500	1580	15,6	101	A+
			700	2140	22,3	96	A+



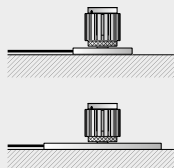
propulsore 55/350



propulsore 55/500



propulsore 65/700

**propulsore 55/350**

IP20



CE



Vb9.580.50.27	argento hacca	led 2700K	10,8W/350mA
Vb9.580.51.27	nero 55 black 55	led 2700K	10,8W/350mA
Vb9.580.50.30	argento hacca	led 3000K	10,8W/350mA
Vb9.580.51.30	nero 55 black 55	led 3000K	10,8W/350mA

Ra	R9	selezione macadam macadam selection	mA	lm	W	lm/W	classe energetica energy class
98	98	step 1	350	1240	10,8	115	A++

tensione minima sul secondario/minimum voltage on the secondary 30,9V
vita media/average life 70000 h

propulsore 55/500

IP20



CE



Vb9.580.62.27	argento hacca	led 2700K	15,6W/500mA
Vb9.580.63.27	nero 55 black 55	led 2700K	15,6W/500mA
Vb9.580.62.30	argento hacca	led 3000K	15,6W/500mA
Vb9.580.63.30	nero 55 black 55	led 3000K	15,6W/500mA

Ra	R9	selezione macadam macadam selection	mA	lm	W	lm/W	classe energetica energy class
98	98	step 1	500	1580	15,6	101	A+

tensione minima sul secondario/minimum voltage on the secondary 30,9V
vita media/average life 70000 h



propulsore 65/700			
--------------------------	--	--	--

Vb9.580.54.27	argento hacca	led 2700K	22,3W/700mA
Vb9.580.55.27	nero 55 black 55	led 2700K	22,3W/700mA
Vb9.580.54.30	argento hacca	led 3000K	22,3W/700mA
Vb9.580.55.30	nero 55 black 55	led 3000K	22,3W/700mA

Ra	R9	selezione macadam macadam selection	mA	lm	W	lm/W	classe energetica energy class
98	98	step 1	700	2140	22,3	96	A+

tensione minima sul secondario/minimum voltage on the secondary 31,8V
vita media/average life 50000 h

lampadina classica. classic bulb.

mario nanni

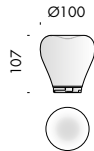
CE 



Vb9.580.01.T hm01 trasparente
hm01 transparent

Vb9.580.01.S hm01 satinata
hm01 frosted

Vb9.580.01.B hm01 bianco latte
hm01 milk white



Vb9.580.02.T hm01 trasparente
hm01 transparent

Vb9.580.02.S hm01 satinata
hm01 frosted

Vb9.580.02.B hm01 bianco latte
hm01 milk white



lampadina decorativa. decorative bulb.

david chipperfield

CE ⓘ

Vb9.580.05.S dc01 satinato
dc01 frosted



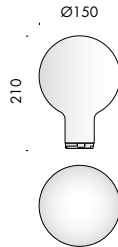
Vb9.580.06.S dc02 satinato
dc02 frosted



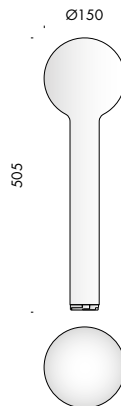
mario nanni

CE ⓘ

Vb9.580.03.S mn01 satinato
mn01 frosted



Vb9.580.04.S mn02 satinato
mn02 frosted



solo per n55 tavolo Vb2.580.01/02
only for n55 tavolo Vb2.580.01/02

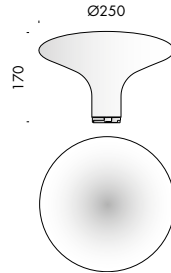




kengo kuma

CE 

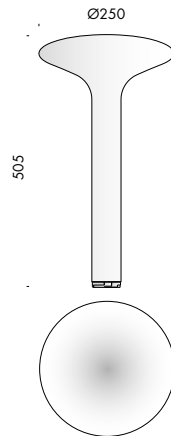
Vb9.580.07.C kk01 cristallo
kk01 crystal



peter zumthor

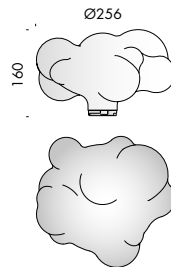
CE 

Vb9.580.08.S pz01 satinato
pz01 frosted



Vb9.580.10.S pz02 satinato
pz02 frosted

solo per n55 tavolo Vb2.580.01/02
only for n55 tavolo Vb2.580.01/02



winy maas

CE 

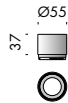
Vb9.580.09.S wm01 satinato
wm01 frosted



lampadina tecnica. technical bulb.



spot 35		CE	i
Vb9.580.21	argento hacca	80°	
Vb9.580.22	nero 55 black 55	80°	



spot 55		CE	i
Vb9.580.45	argento hacca	43°	
Vb9.580.46	nero 55 black 55	43°	



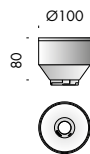
Vb9.580.23	argento hacca	25°
Vb9.580.24	nero 55 black 55	25°
Vb9.580.25	argento hacca	40°
Vb9.580.26	nero 55 black 55	40°
Vb9.580.27	argento hacca	60°
Vb9.580.28	nero 55 black 55	60°




spot 82

CE ⓘ

Vb9.580.29	argento hacca	10°
Vb9.580.30	nero 55 black 55	10°
Vb9.580.31	argento hacca	25°
Vb9.580.32	nero 55 black 55	25°
Vb9.580.33	argento hacca	40°
Vb9.580.34	nero 55 black 55	40°
Vb9.580.35	argento hacca	60°
Vb9.580.36	nero 55 black 55	60°

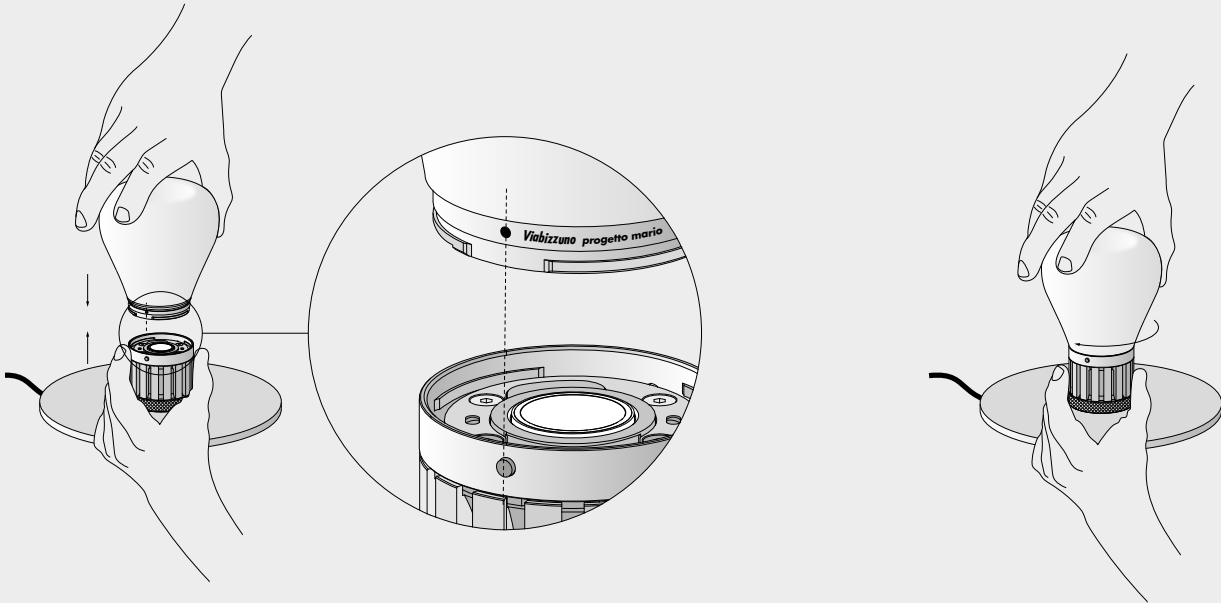

spot 100

CE ⓘ

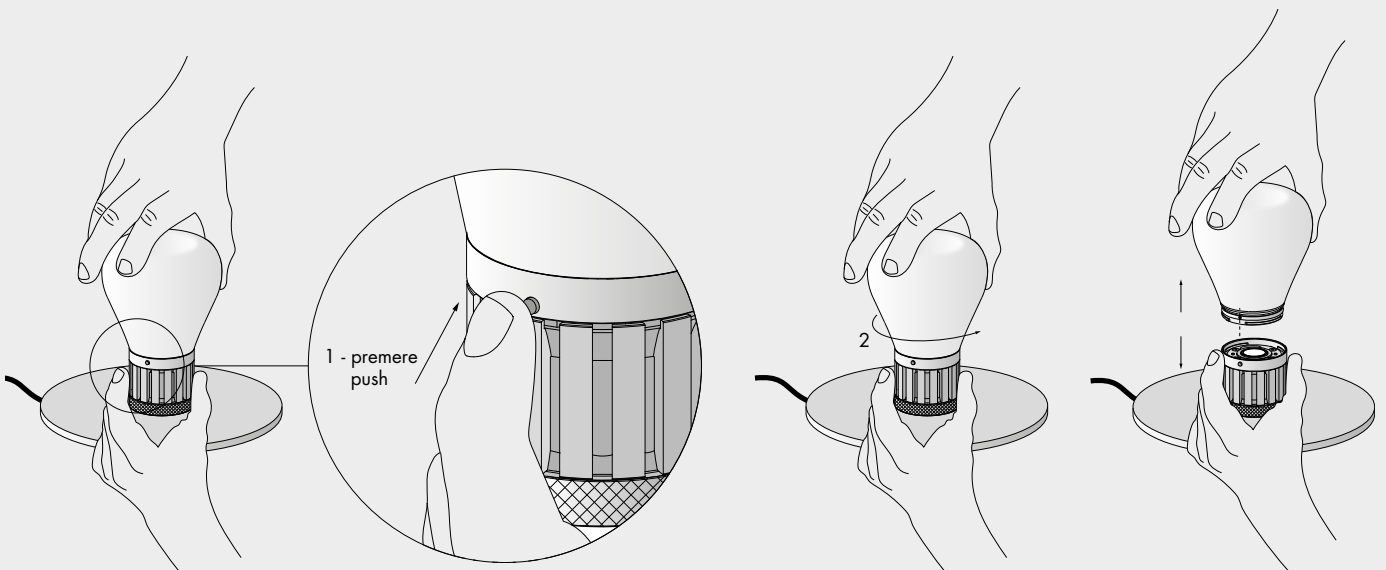
Vb9.580.37	argento hacca	10°
Vb9.580.38	nero 55 black 55	10°
Vb9.580.39	argento hacca	25°
Vb9.580.40	nero 55 black 55	25°
Vb9.580.41	argento hacca	40°
Vb9.580.42	nero 55 black 55	40°
Vb9.580.43	argento hacca	60°
Vb9.580.44	nero 55 black 55	60°



montaggio vetro su propulsore
glass mounting on propeller

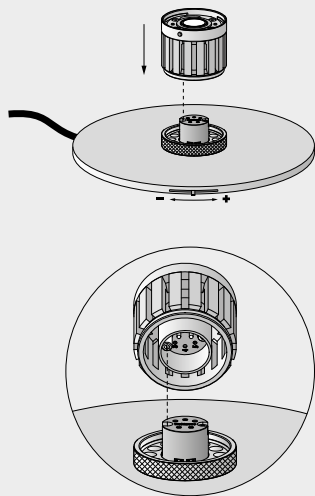


smontaggio vetro dal propulsore
removing glass from the propeller

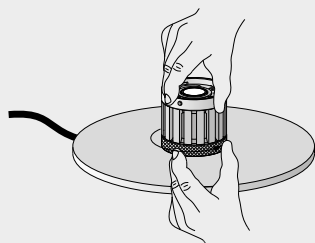


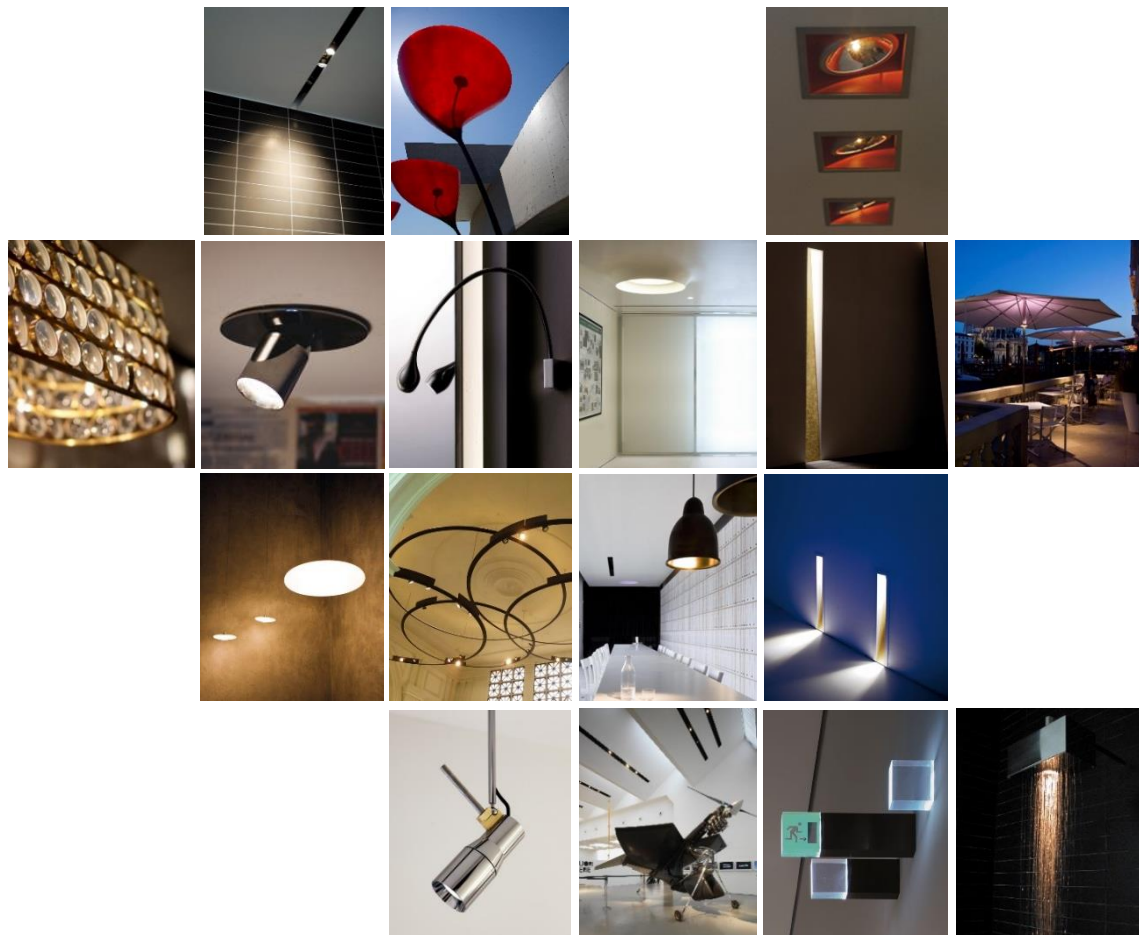
montaggio propulsore su base n55 ta
propeller mounting on n55 ta base

1. innestare il propulsore sull'interfaccia
engage the propeller on the interface



2. serrare la ghiera per assicurare
il fissaggio
tighten the lock nut to secure the set





**Distributor for Viabizzuno
Architectural Lighting Solutions**

Web: www.cirruslighting.co.uk

Email: sales@cirruslighting.co.uk

Tel: 0207 193 2175

Fax: 0207 193 3175

