

royal soffitto david chipperfield 2013



**apparecchio di illuminazione a soffitto per interni IP20.
realizzato in alluminio verniciato o in ottone ossidato.
costituito da un corpo cilindrico strombato e da un vetro cilindrico trasparente in pirex la cui
chiusura è realizzata mediante l'utilizzo di un cono in ottone riflettente.**

modelli:

royal soffitto diametro Ø80mm h.305mm,

royal parete diametro Ø100mm h.385mm.

cablato con sorgente elettronica 3000K Ra98 fino a 14W 1580lm.

alimentatore in corrente costante escluso, da installare remoto.

accessori: sistema di fissaggio a cartongesso.

finiture: my bianco, nero55 e copper bronze.

IP20 rated ceiling light fitting for indoor use.

made of painted aluminium or oxidised brass.

**consisting of a splayed cylindrical body and a transparent pyrex cylindrical glass that is
closed by means of a reflecting brass cone.**

versions:

royal soffitto diameter Ø80mm h.305mm,

royal parete diameter Ø100mm h.385mm.

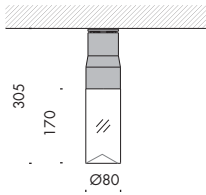
wired with 3000K Ra95 led source up to 14W 1580lm.

constant current power supply not included, to be installed remotely.

accessories: plasterboard installation kit.

finishes: nero 55 and copper bronze.





royal soffitto Ø80



IP20

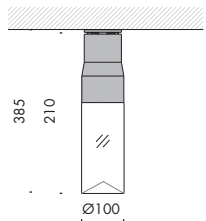


CE



| | | | | |
|-------------------|---------------|--------------------------|-------|-----|
| Vb6.573.46 | my bianco | trasparente · trasparent | 3000K | 2,2 |
| Vb6.573.47 | nero55 | trasparente · trasparent | 3000K | 2,2 |
| Vb6.573.48 | copper bronze | trasparente · trasparent | 3000K | 2,2 |

| Ra | R9 | ies tm-30 | | sdc | mA | V _f (min) | lm | W | lm/W | |
|-------|-------|-----------|---------|---------------------------|---------|----------------------|------|-----|------|------------|
| 98 | 98 | Rf 96 | Rg 103 | step 1 | 350 | 27,6 | 1240 | 9,7 | 128 | A++ |
| xm001 | les19 | ● | Ta25 °C | vita media · average life | 70000 h | L80 | B10 | | | |



royal soffitto Ø100



IP20



CE



| | | | | |
|-------------------|---------------|--------------------------|-------|-----|
| Vb6.573.56 | my bianco | trasparente · trasparent | 3000K | 3,4 |
| Vb6.573.57 | nero55 | trasparente · trasparent | 3000K | 3,4 |
| Vb6.573.58 | copper bronze | trasparente · trasparent | 3000K | 3,4 |

| Ra | R9 | ies tm-30 | | sdc | mA | V _f (min) | lm | W | lm/W | |
|-------|-------|-----------|---------|---------------------------|---------|----------------------|------|------|------|------------|
| 98 | 98 | Rf 96 | Rg 103 | step 1 | 350 | 27,6 | 1240 | 9,7 | 128 | A++ |
| | | | | | 500 | 27,9 | 1580 | 14,0 | 113 | A+ |
| xm001 | les19 | ● | Ta25 °C | vita media · average life | 70000 h | L80 | B10 | | | |

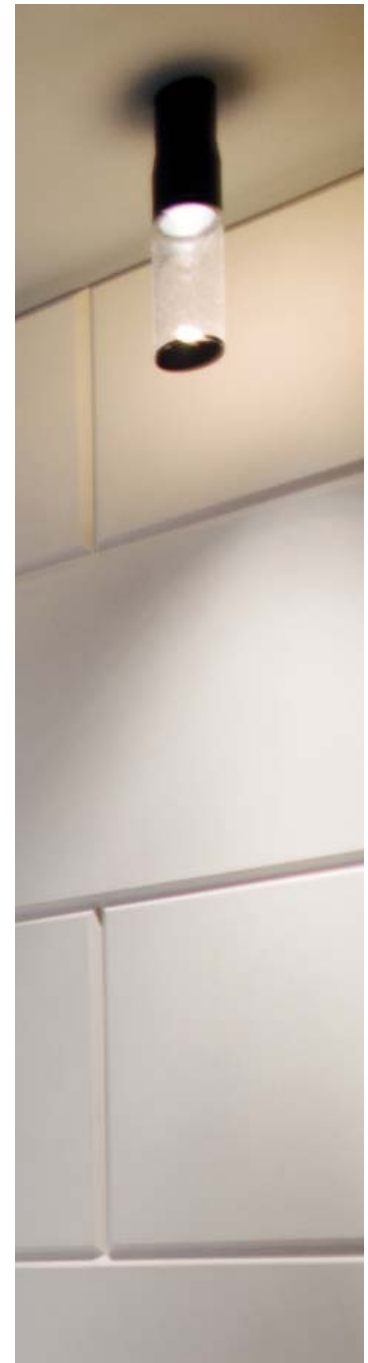
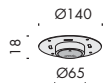
accessori. accessories.



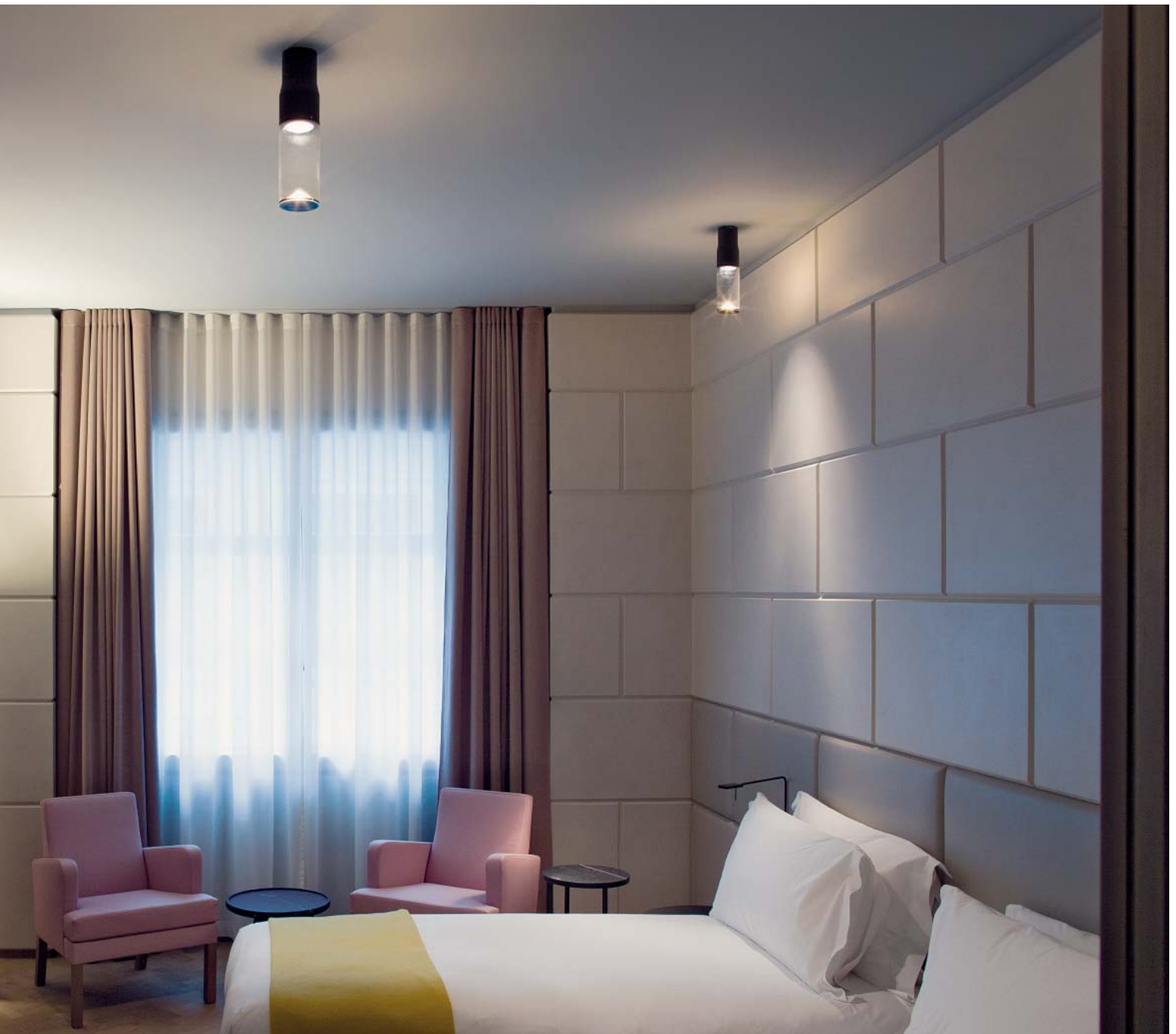
CE



| | | |
|------------------|--|-----|
| a9.573.89 | kit fissaggio cartongesso plasterboard fixing kit | 0,2 |
|------------------|--|-----|









Subscribe To Our Newsletter



**Distributor for Viabizzuno
Architectural Lighting Solutions**

Web: www.cirruslighting.co.uk

Email: sales@cirruslighting.co.uk

Tel: 0207 193 2175

Fax: 0207 193 3175

