



apparecchio di illuminazione da parete per interni IP20. composto da corpo di forma rettangolare 240x75x95mm, realizzato in acciaio verniciato a polvere.

modelli:

net 24 parete biemissione con luce diretta 20° 6,8W 493lm orientabile di 360° sull'asse verticale e 20° sull'asse orizzontale, completa di anello antiabbagliamento per garantire comfort visivo, e luce indiretta diffusa 12,4W fino a 826lm con vetro trasparente di protezione,

net 24 parete monoemissione con vetro trasparente di protezione per luce diffusa 11,9W 877lm.

cablato con sorgente elettronica 2700K o 3000K.

alimentatore 240V 50-60Hz incluso.

finiture: bianco V, argento hacca e marrone mn.

IP20 rated wall light fitting for indoor use. made of a powder coated steel rectangular body measuring 240x75x95mm.

versions:

net 24 parete biemissione with 20° direct light 6.8W 493lm adjustable by 360° on the vertical axis and by 20° on the horizontal axis, provided with an anti-glare ring ensuring high visual comfort, and diffused indirect light 12.4W up to 826lm with protective transparent glass,

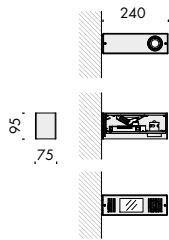
net 24 parete monoemissione with protective transparent glass for diffuse light 11.9W 877lm.

wired with 2700K or 3000K led source.

240V 50-60Hz power supply included.

finishes: bianco V, argento hacca and marrone mn.





net 24 parete biemissione 240V 50-60Hz **A** **ff** **IP20** **CE** **i**

Vb5.592.01.27	bianco V	2700K	l.d. 20°	1,7
			l.i. 60°	
Vb5.592.02.27	argento hacca	2700K	l.d. 20°	1,7
			l.i. 60°	
Vb5.592.04.27	marrone mn	2700K	l.d. 20°	1,7
			l.i. 60°	

I.d. (luce diretta - direct light)

Ra	ies tm-30		sdc	mA	V _f (min)	lm	W	lm/W	
95	Rf 92	Rg 100	step 2	700	9,7	433	6,8	64	A
cd020	les6 • Ta25 °C		vita media · average life		50000 h	L80	B10		

I.i. (luce indiretta - indirect light)

Ra	ies tm-30		sdc	mA	V _f (min)	lm	W	lm/W	
95	Rf 92	Rg 100	step 2	700	17,8	767	12,4	62	A
cd010	Ta25 °C		vita media · average life		50000 h	L70	B10		

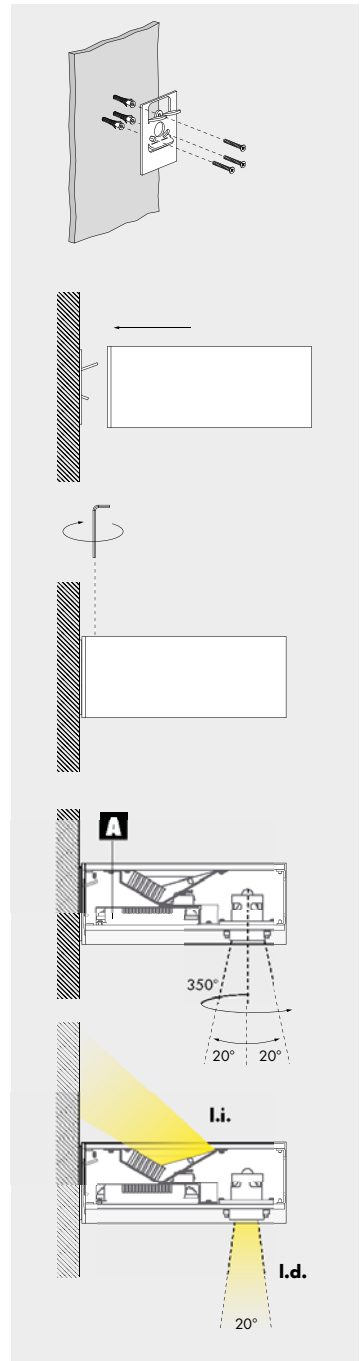
Vb5.592.01.30	bianco V	3000K	l.d. 20°	1,7
			l.i. 60°	
Vb5.592.02.30	argento hacca	3000K	l.d. 20°	1,7
			l.i. 60°	
Vb5.592.04.30	marrone mn	3000K	l.d. 20°	1,7
			l.i. 60°	

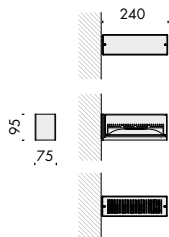
I.d. (luce diretta - direct light)

Ra	ies tm-30		sdc	mA	V _f (min)	lm	W	lm/W	
95	Rf 92	Rg 100	step 2	700	9,7	493	6,8	73	A+
cd021	les6 • Ta25 °C		vita media · average life		50000 h	L80	B10		

I.i. (luce indiretta - indirect light)

Ra	ies tm-30		sdc	mA	V _f (min)	lm	W	lm/W	
95	Rf 92	Rg 100	step 2	700	17,8	826	12,4	66	A
cd011	les6 • Ta25 °C		vita media · average life		50000 h	L70	B10		





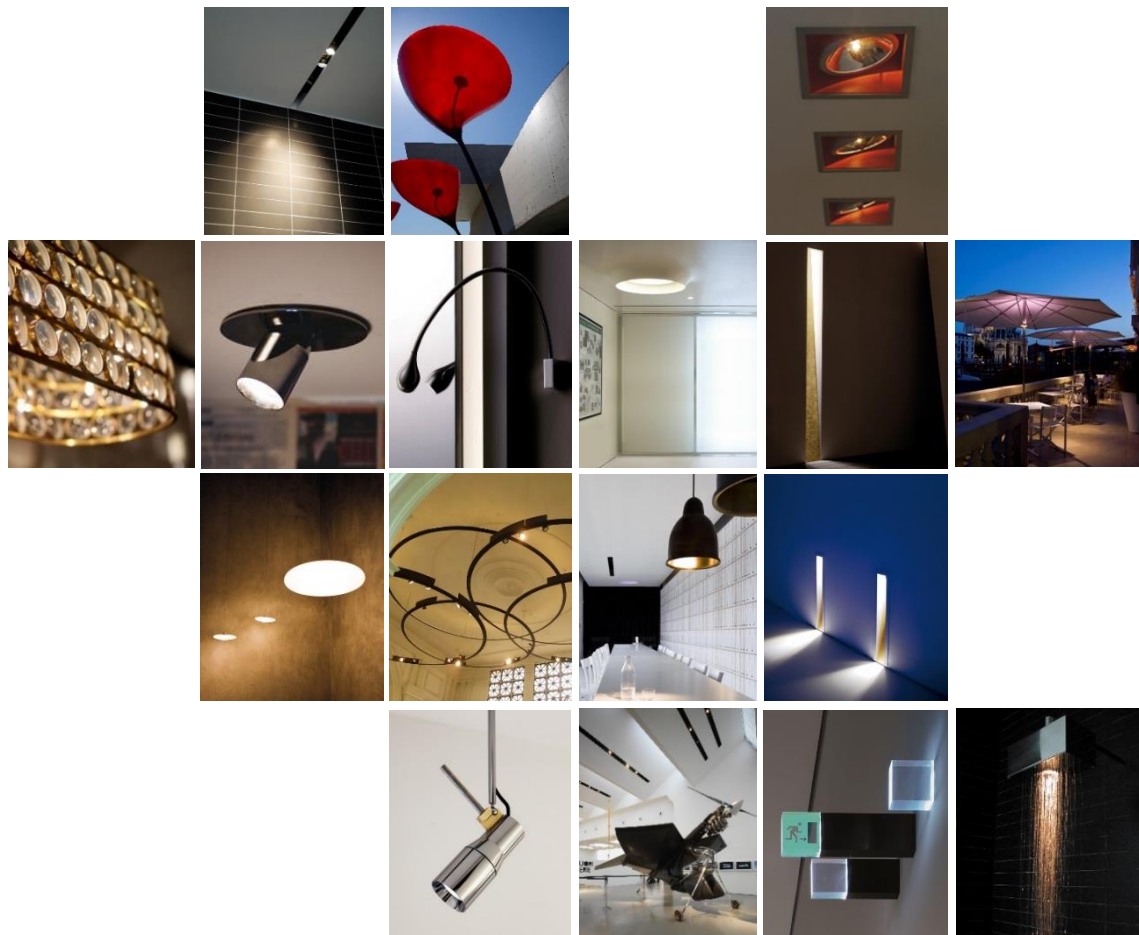
net 24 parete monoemissione 240V 50-60Hz **A** **ff** **IP20** **CE** **i**

Vb5.592.05.27	bianco V	2700K	1,7
Vb5.592.06.27	argento hacca	2700K	1,7
Vb5.592.07.27	marrone mn	2700K	1,7

Ra	R9	ies tm-30		sdc	mA	V _{f (min)}	lm	W	lm/W	
97	90	Rf 96	Rg 100	step 2	500	23,7	877	11,9	74	A
dz010	Ta25 °C		vita media · average life			50000 h	L80	B10		

Vb5.592.05.30	bianco V	3000K	1,7
Vb5.592.06.30	argento hacca	3000K	1,7
Vb5.592.07.30	marrone mn	3000K	1,7

Ra	R9	ies tm-30		sdc	mA	V _{f (min)}	lm	W	lm/W	
97	90	Rf 96	Rg 100	step 2	500	23,7	1002	11,9	84	A+
dz011	Ta25 °C		vita media · average life			50000 h	L80	B10		



Subscribe To Our Newsletter



**Distributor for Viabizzuno
Architectural Lighting Solutions**

Web: www.cirruslighting.co.uk

Email: sales@cirruslighting.co.uk

Tel: 0207 193 2175

Fax: 0207 193 3175

