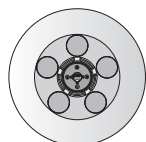
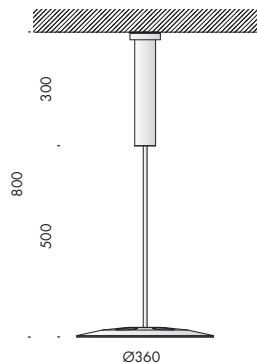




apparecchio di illuminazione a sospensione per interni IP20 realizzato in alluminio verniciato a polvere.
composto da un rosone a soffitto, tige rigida e da un disco di diametro Ø360 h.60mm che alloggia cinque sorgenti per luce indiretta ed è ricoperto da un piatto in ottone naturale o acciaio inox lucido.
cablato con sorgenti elettroniche 3000K Ra98 5x9,7W 5x1240lm.
alimentatore 240V 50-60Hz incluso, incorporato all'interno nella versione con rosone h.300mm, da installare remoto nella versione con rosone h.18,5mm.
finiture: bianco V - ottone naturale e bianco V - acciaio inox lucido
l'impiego di materiali naturali donano nel tempo alla lampada una ossidazione caratteristica, diversa per ogni luogo in cui la si installi, a seconda del grado di umidità.

IP20 rated suspension light fitting for indoor use, made of powder coated aluminium.
it consists of a ceiling mounted rose, a rigid rod and a diameter Ø360 h.60mm disc which contains five indirect light sources and it is covered by a natural brass or polished stainless steel plate.
wired with 3000K Ra98 5x9.7W 5x1240lm led sources.
240V 50-60Hz power supply included; it is integrated in the h.300mm rose version, while it has to be installed remotely in the h.18.5mm rose version.
finishes: bianco V - natural brass and bianco V - polished stainless steel
the use of natural materials over time gives the lamp an oxidised appearance, which is different depending on where it is installed, based on the humidity level.





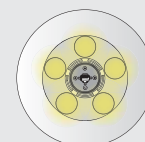
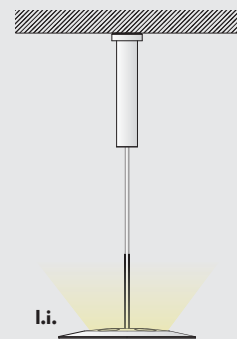
tresesanta 240V 50-60Hz **A** IP20 **CE**

Vb8.609.01 bianco V · ottone naturale
natural brass 3000K l.i. 5x9,7W 6

Vb8.609.02 bianco V · acciaio inox lucido
polished stainless steel 3000K l.i. 5x9,7W 5

I.i. (luce indiretta · indirect light)

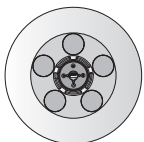
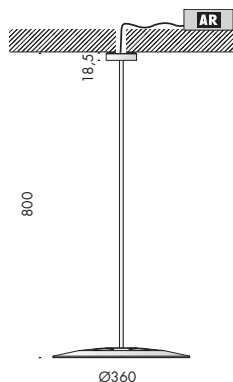
Ra	R9	ies tm-30		sdc	mA	V _{f (min)}	lm	W	lm/W	
98	98	Rf 96	Rg 103	step 1	350	138	6200	48,5	128	A++
xm001-5	les19	Ta25 °C		vita media · average life			70000 h	L80	B10	



tresesanta 240V 50-60Hz **AR** IP20 **CE**

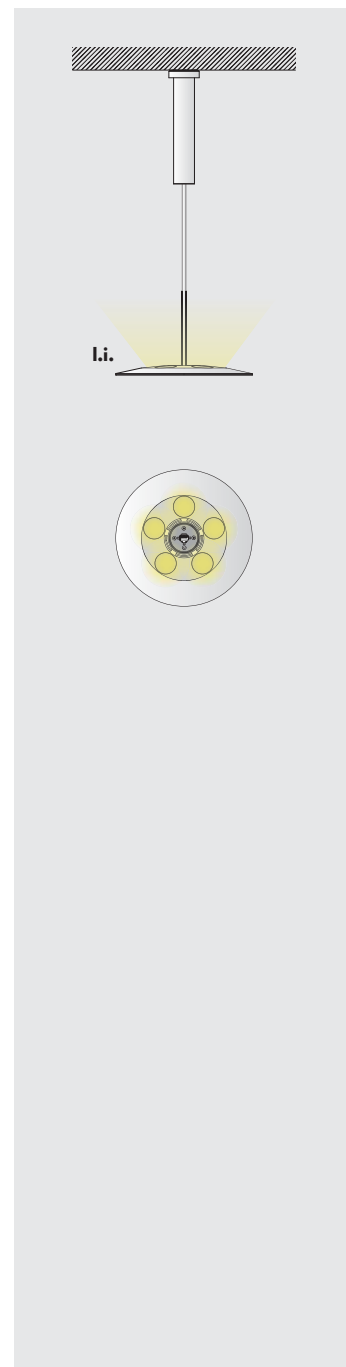
Vb8.609.05 bianco V · ottone naturale
natural brass 3000K l.i. 5x9,7W 6

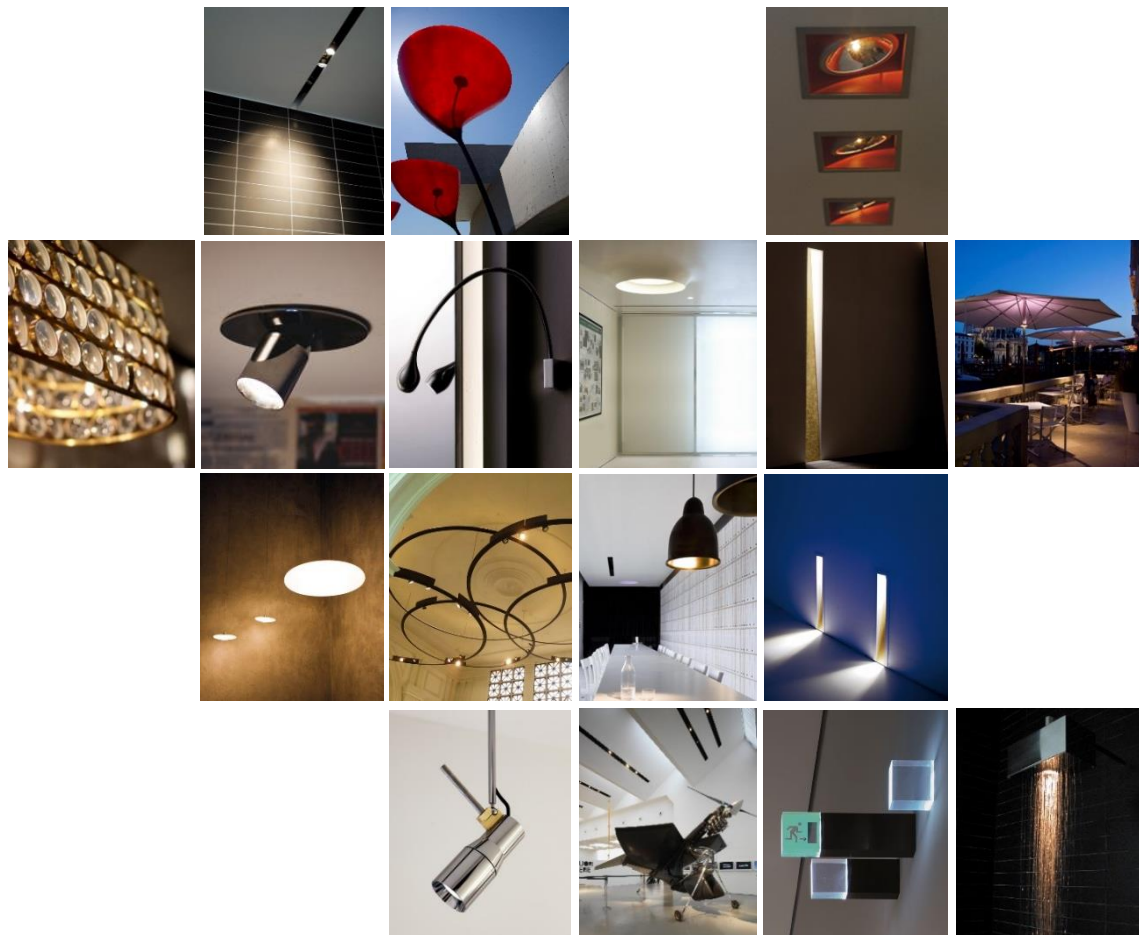
Vb8.609.06 bianco V · acciaio inox lucido
polished stainless steel 3000K l.i. 5x9,7W 5



I.i. (luce indiretta · indirect light)

Ra	R9	ies tm-30		sdc	mA	V _{f (min)}	lm	W	lm/W	
98	98	Rf 96	Rg 103	step 1	350	138	6200	48,5	128	A++
xm001-5	les19	Ta25 °C		vita media · average life			70000 h	L80	B10	





Subscribe To Our Newsletter



**Distributor for Viabizzuno
Architectural Lighting Solutions**

Web: www.cirruslighting.co.uk

Email: sales@cirruslighting.co.uk

Tel: 0207 193 2175

Fax: 0207 193 3175

