

corrimano in luce



mario nanni 2012

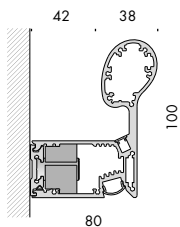


david chipperfield mario nanni 2012

**sistema di illuminazione per interni IP20.
realizzato con estruso in alluminio anodizzato 1000mm, 2000mm, 3000mm, con supporti di fissaggio ogni 500mm, completo di coppia di tappi terminali e diffusore in policarbonato satinato. cablato con due sorgenti elettroniche lineari 3000K Ra95 13W/m per luce diretta e indiretta, con limitatore di corrente integrato. alimentatore 220-240V 50-60Hz incluso.
finiture: acciaio acciaio e marrone mn.**

**IP20 rated lighting system for indoor use.
made of extruded oxidized aluminium 1000mm, 2000mm, 3000mm, with fixing brackets every 500mm, supplied with a pair of end caps and frosted polycarbonate diffuser.
wired with two linear 3000K Ra95 13W/m led sources for direct and indirect light, with integrated current limiter.
220-240V 50-60Hz power supply included.
finishes: acciaio acciaio and marrone mn.**





corrimano in luce 1 220-240V 50-60Hz

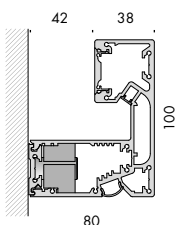
Vb6.046.11	acciaio acciaio	3000K	26W	1000mm	3,2
Vb6.046.13	marrone mn	3000K	26W	1000mm	3,2
Vb6.046.21	acciaio acciaio	3000K	52W	2000mm	6,4
Vb6.046.23	marrone mn	3000K	52W	2000mm	6,4
Vb6.046.31	acciaio acciaio	3000K	78W	3000mm	9,6
Vb6.046.33	marrone mn	3000K	78W	3000mm	9,6

I.d. (luce diretta - direct light)

Ra	R9	ies tm/30		sdcn	Vf	lm/m	W/m	lm/W	
95	90	Rf 93	Rg 102	step 2	24	1250	13	96	A+
V0001	5,9	Ta25 °C		vita media · average life		50000 h	L80	B10	

I.i. (luce indiretta - indirect light)

Ra	R9	ies tm/30		sdcn	Vf	lm/m	W/m	lm/W	
95	90	Rf 93	Rg 102	step 2	24	1250	13	96	A+
V0001	5,9	Ta25 °C		vita media · average life		50000 h	L80	B10	



corrimano in luce 2 220-240V 50-60Hz

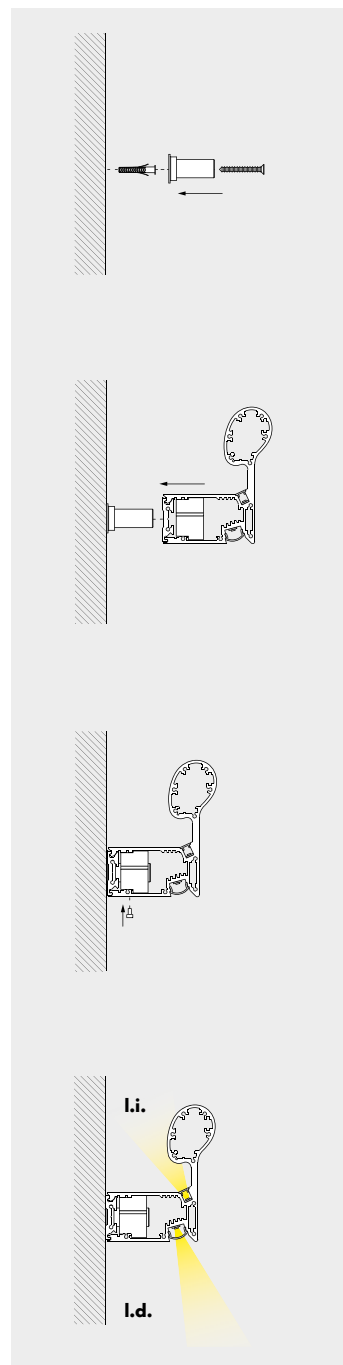
Vb6.047.11	acciaio acciaio	3000K	26W	1000mm	3,2
Vb6.047.13	marrone mn	3000K	26W	1000mm	3,2
Vb6.047.21	acciaio acciaio	3000K	52W	2000mm	6,4
Vb6.047.23	marrone mn	3000K	52W	2000mm	6,4
Vb6.047.31	acciaio acciaio	3000K	78W	3000mm	9,6
Vb6.047.33	marrone mn	3000K	78W	3000mm	9,6

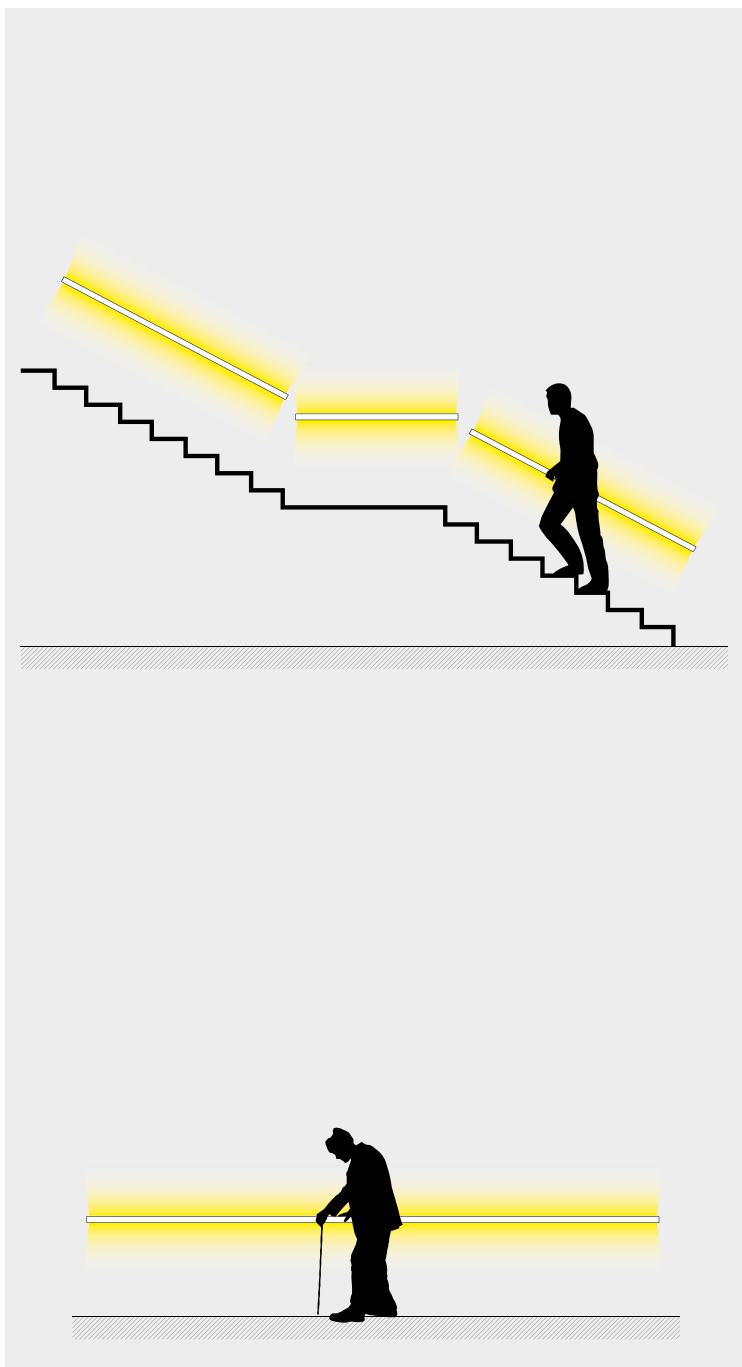
I.d. (luce diretta - direct light)

Ra	R9	ies tm/30		sdcn	Vf	lm/m	W/m	lm/W	
95	90	Rf 93	Rg 102	step 2	24	1250	13	96	A+
V0001	5,9	Ta25 °C		vita media · average life		50000 h	L80	B10	

I.i. (luce indiretta - indirect light)

Ra	R9	ies tm/30		sdcn	Vf	lm/m	W/m	lm/W	
95	90	Rf 93	Rg 102	step 2	24	1250	13	96	A+
V0001	5,9	Ta25 °C		vita media · average life		50000 h	L80	B10	





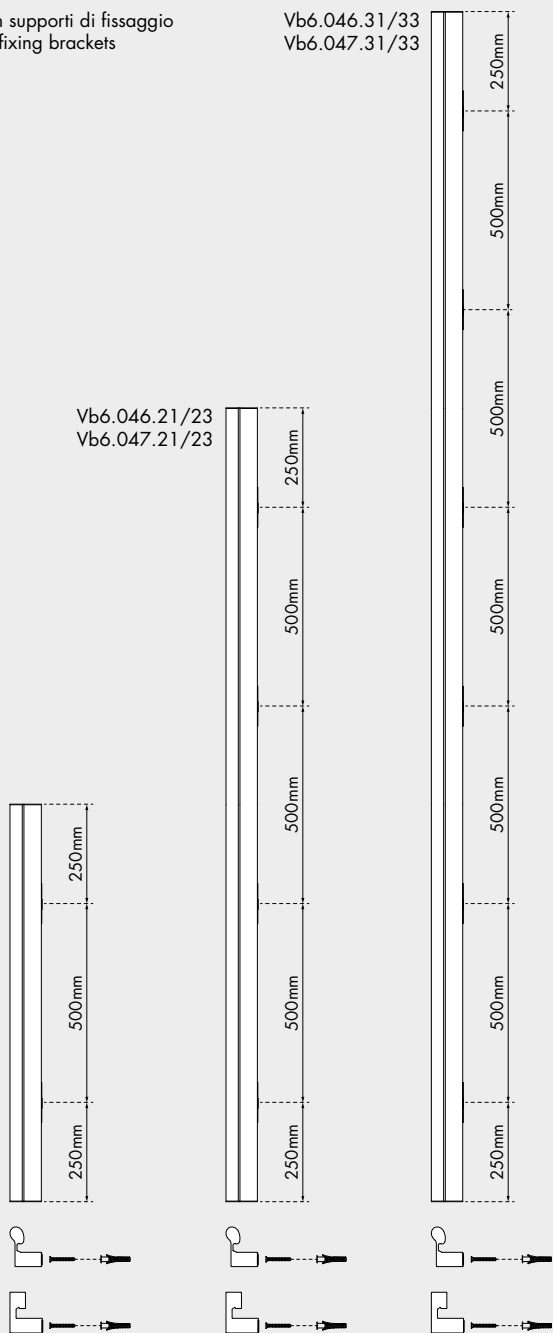


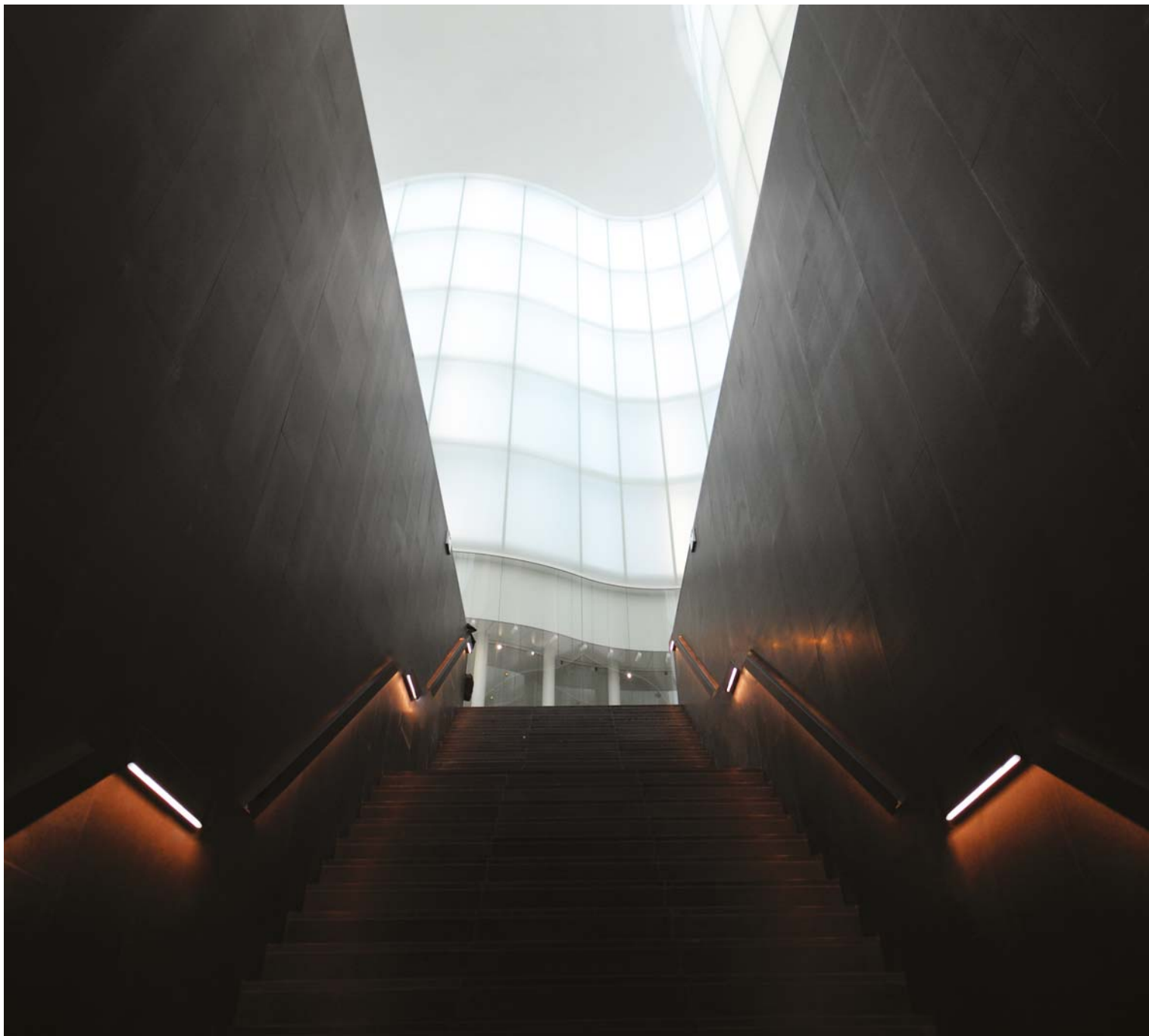
installazione con supporti di fissaggio
installation with fixing brackets

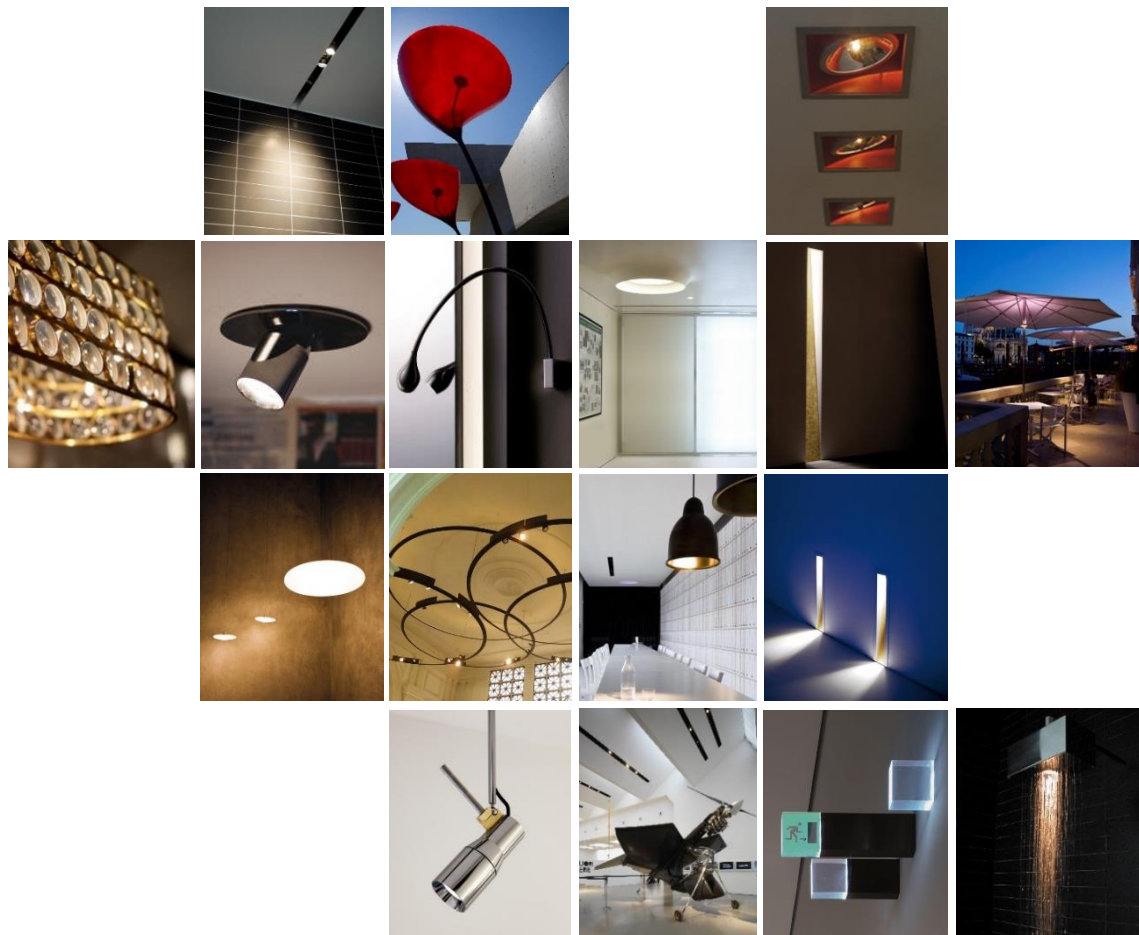
Vb6.046.31/33
Vb6.047.31/33

Vb6.046.21/23
Vb6.047.21/23

Vb6.046.11/13
Vb6.047.11/13







Subscribe To Our Newsletter



**Distributor for Viabizzuno
Architectural Lighting Solutions**

Web: www.cirruslighting.co.uk

Email: sales@cirruslighting.co.uk

Tel: 0207 193 2175

Fax: 0207 193 3175

